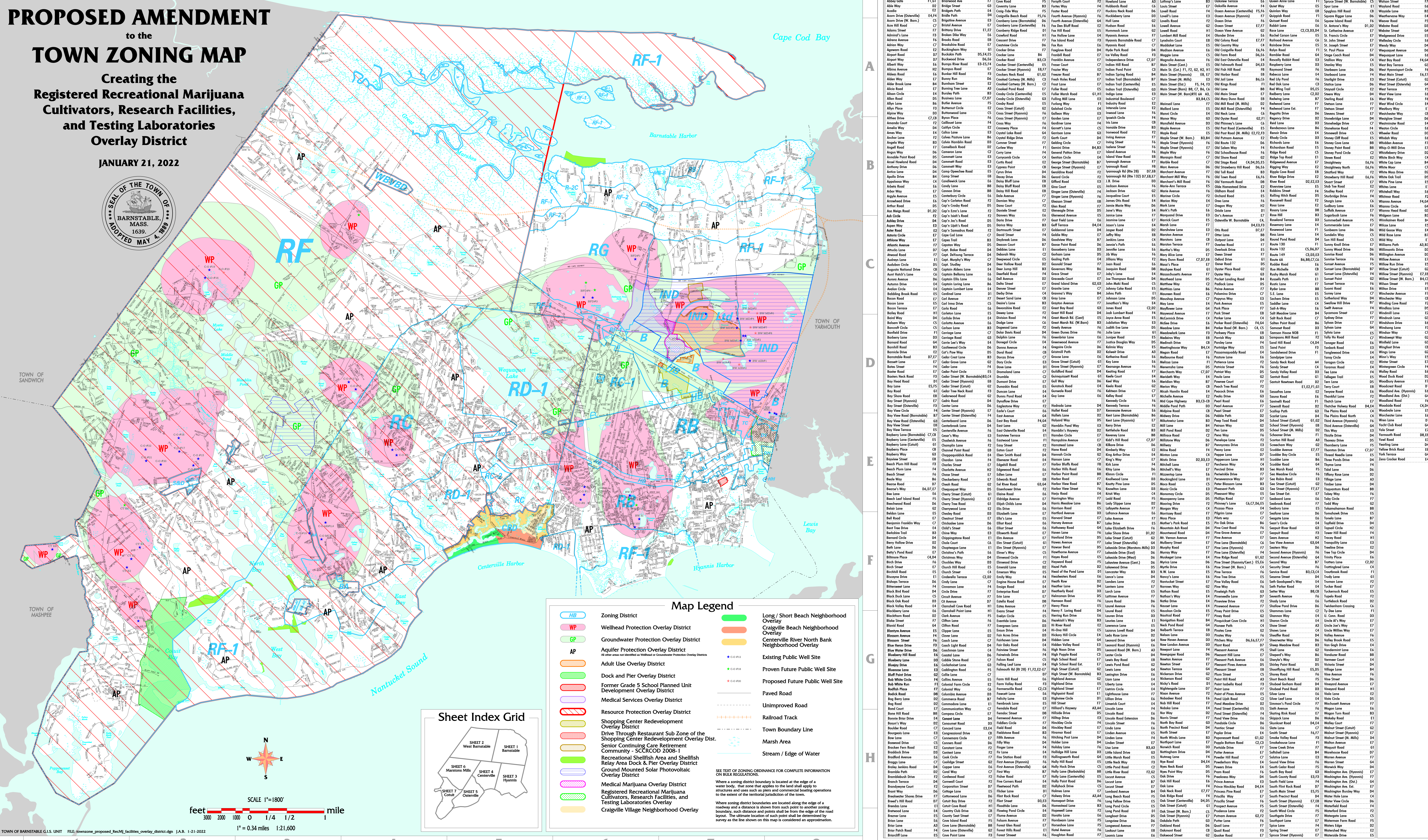


# PROPOSED AMENDMENT

## to the TOWN ZONING MAP Creating the Registered Recreational Marijuana Cultivators, Research Facilities, and Testing Laboratories Overlay District

JANUARY 21, 2022



### Map Legend

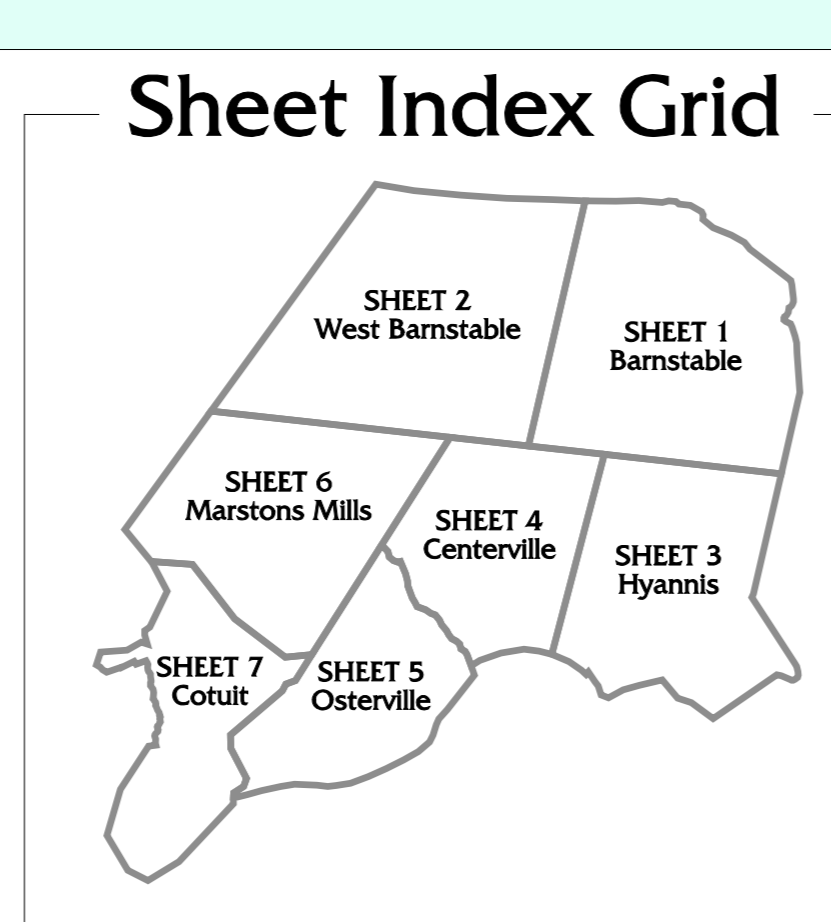
HB	Zoning District	Long / Short Beach Neighborhood Overlay
WP	Wellhead Protection Overlay District	Craigville Beach Neighborhood Overlay
GP	Groundwater Protection Overlay District	Centerville River North Bank Neighborhood Overlay
AP	Aquifer Protection Overlay District	Existing Public Well Site
ADU	Adult Use Overlay District	Proven Future Public Well Site
Dock	Dock and Pier Overlay District	Proposed Future Public Well Site
FGS	Former Grade 5 School Planned Unit Development Overlay District	Paved Road
MSD	Medical Services Overlay District	Unimproved Road
RPO	Resource Protection Overlay District	Railroad Track
SCRD	Shopping Center Redevelopment Overlay District	Town Boundary Line
SRS	Senior Continuing Care Retirement Community - SCCROD 2008-1	Marsh Area
SRA	Recreational Shellfish Area and Shellfish Relay Area Dock & Pier Overlay District	Stream / Edge of Water
GMS	Ground Mounted Solar Photovoltaic Overlay District	
MRJ	Medical Marijuana Overlay District	
RR	Registered Recreational Marijuana Cultivators, Research Facilities, and Testing Laboratories Overlay	
CV	Craigville Village Neighborhood Overlay	

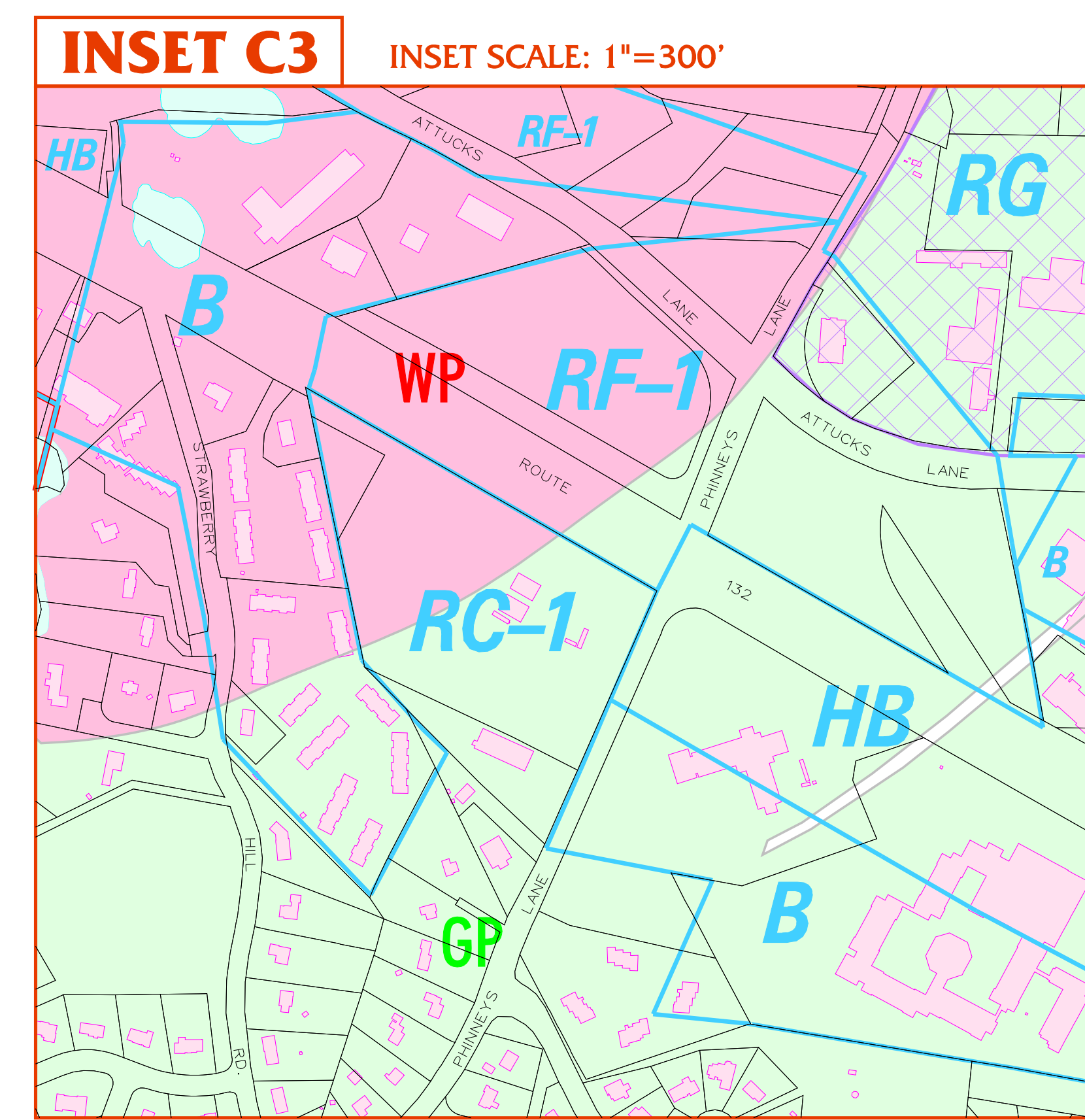
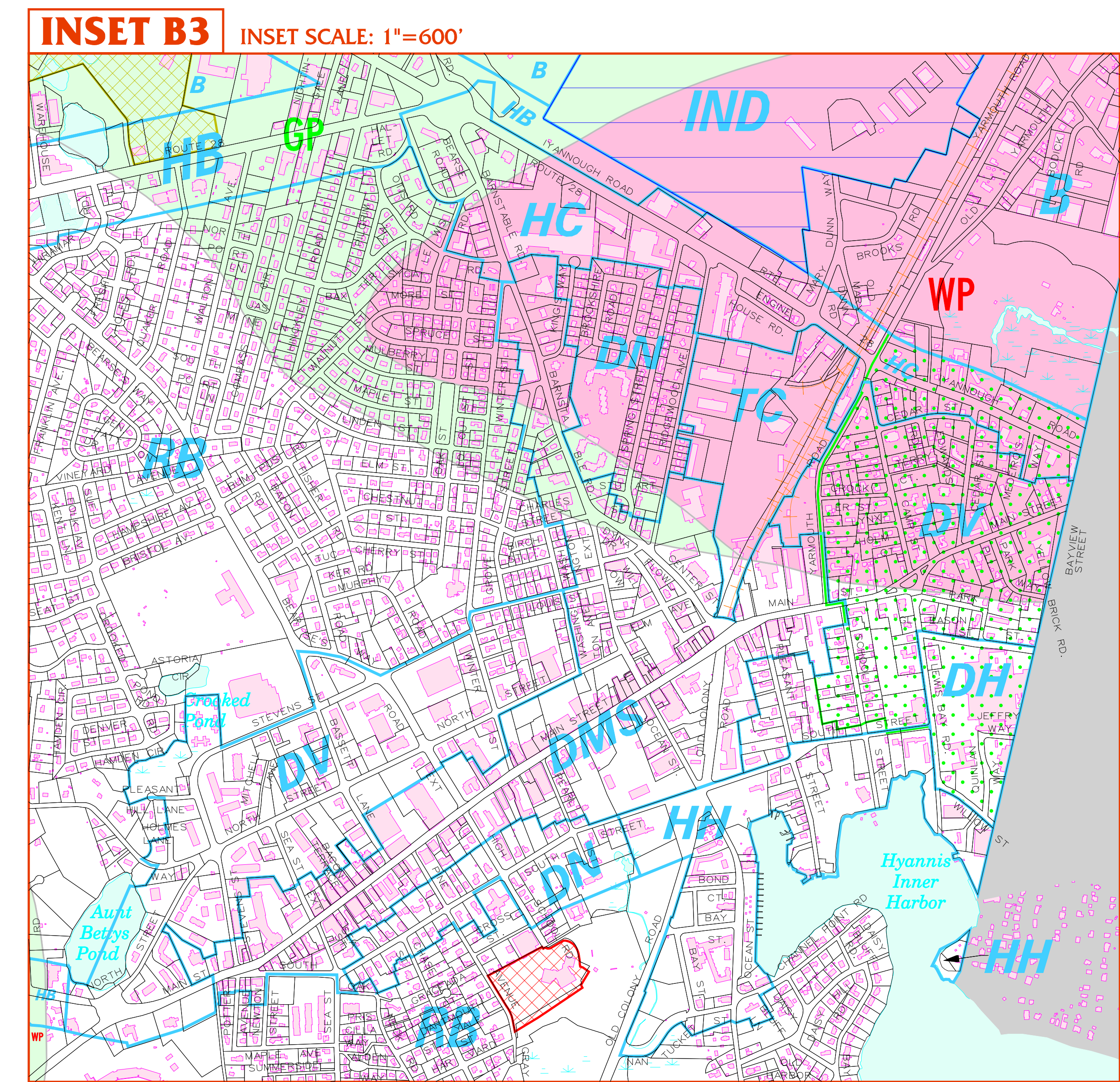
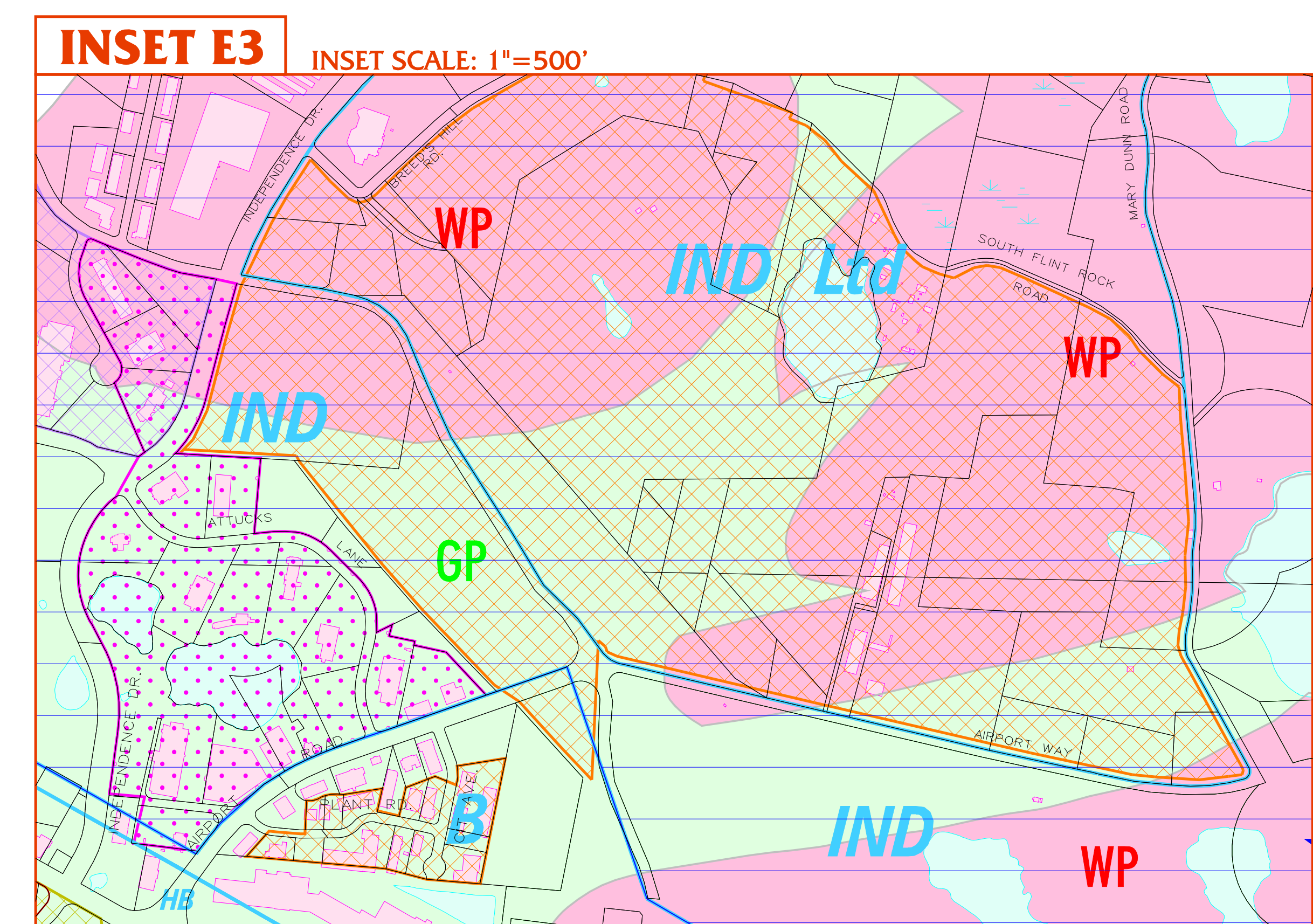
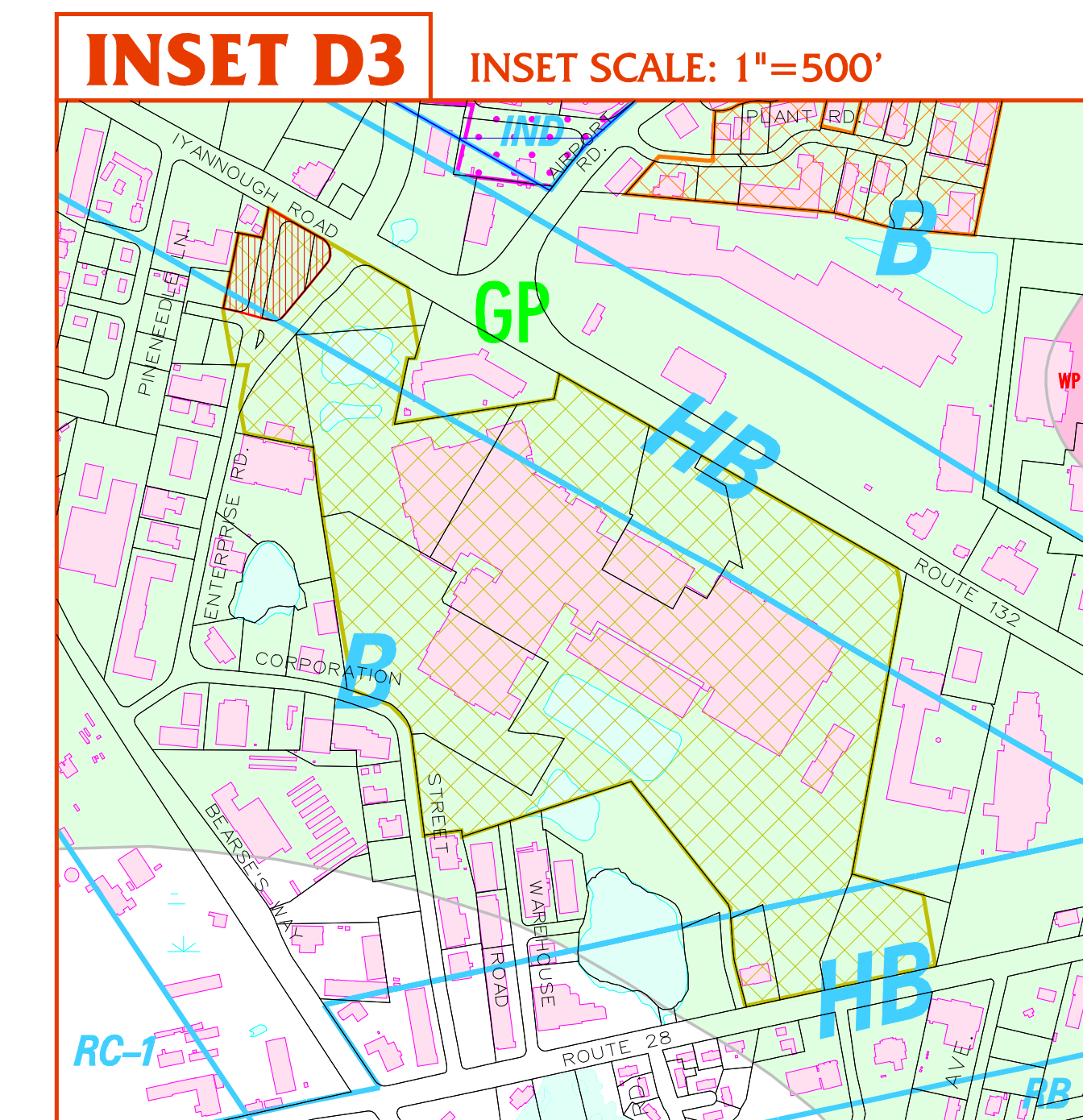
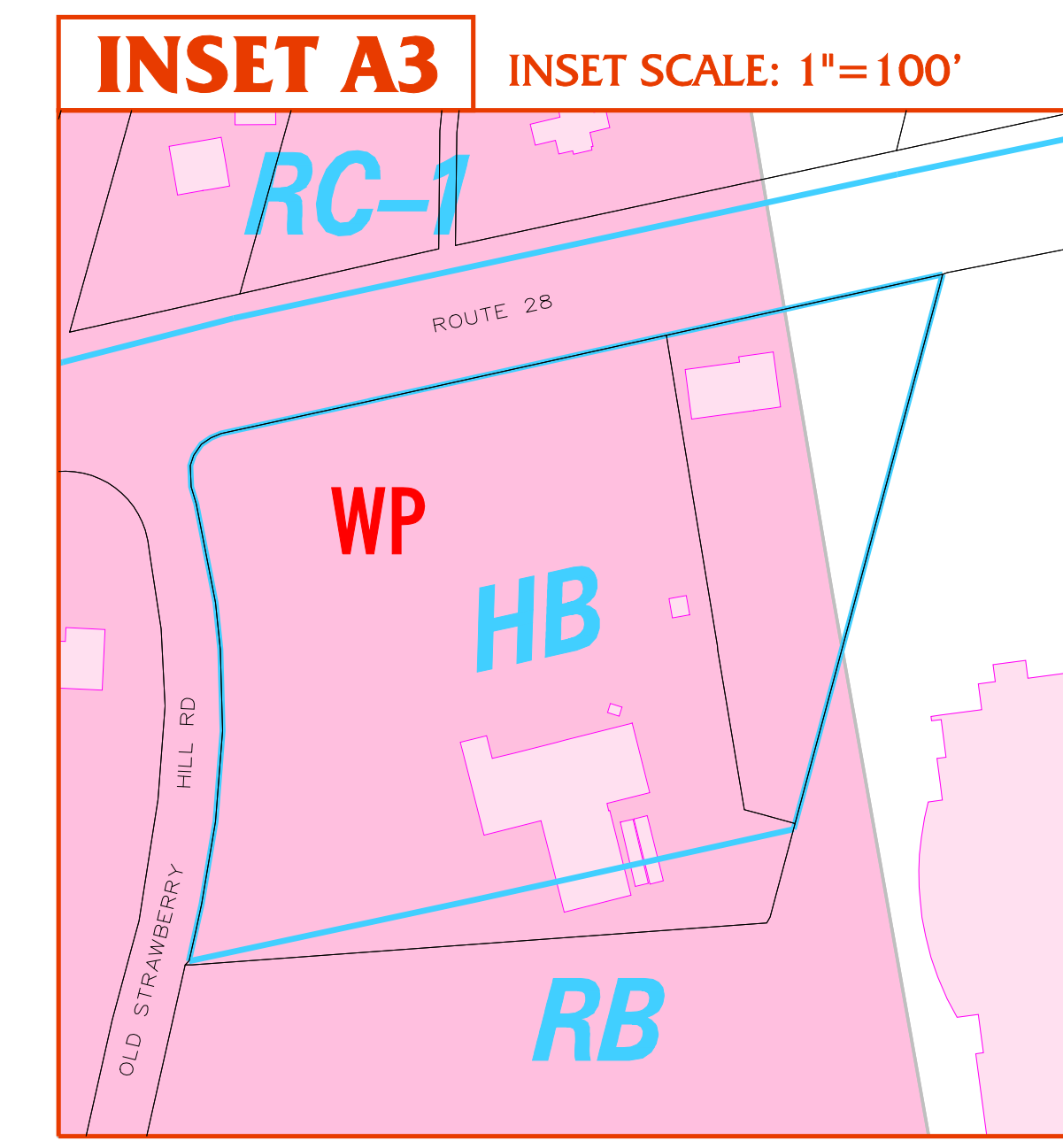
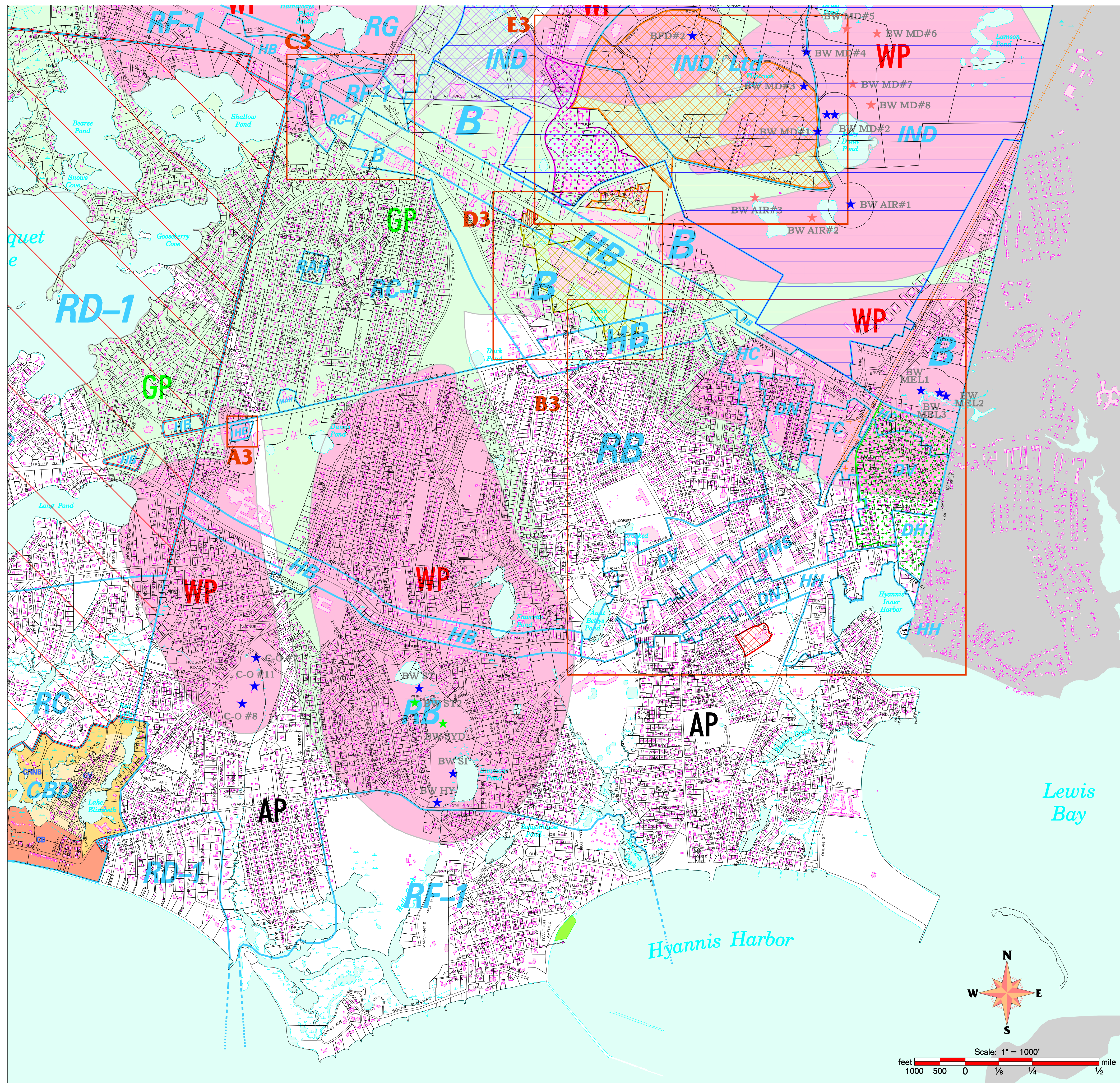
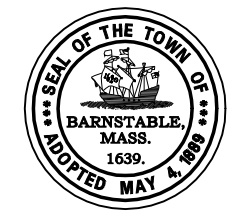
SEE TEXT OF ZONING ORDINANCE FOR COMPLETE INFORMATION ON BULK REGULATIONS.

Where zoning district boundaries are located along the edge of a water body, that zone that applies to the land shall apply to structures and uses such as piers and commercial boating operations to the extent of the territorial jurisdiction of the town.

Where zoning district boundaries are located along the edge of a water body, that zone that applies to the land shall apply to structures and uses such as piers and commercial boating operations to the extent of the territorial jurisdiction of the town.

The ultimate location of each point shall be determined by survey as the lines shown on this map is considered an approximation.





### Map Legend

	Zoning District		Long / Short Beach Neighborhood Overlay
	Wellhead Protection Overlay District		Craigville Beach Neighborhood Overlay
	Groundwater Protection Overlay District		Centerville River North Bank Neighborhood Overlay
	Aquifer Protection Overlay District		Existing Public Well Site
	Adult Use Overlay District		Proven Future Public Well Site
	Dock and Pier Overlay District		Proposed Future Public Well Site
	Former Grade 5 School Planned Unit Development Overlay District		Parcel Lines (FY 2022)
	Medical Services Overlay District		Buildings
	Resource Protection Overlay District		Railroad Track
	Shopping Center Redevelopment Overlay District		Town Boundary Line
	Drive Through Restaurant Sub Zone of the Shopping Center Redevelopment Overlay Dist.		Marsh Area
	Senior Continuing Care Retirement Community - SCCRCOD 2008-1		Stream / Edge of Water
	Recreational Shellfish Area and Shellfish Relay Area Dock & Pier Overlay District		
	Ground Mounted Solar Photovoltaic Overlay District		
	Medical Marijuana Overlay District		
	Registered Recreational Marijuana Cultivators, Research Facilities, and Testing Laboratories Overlay District		
	Craigville Village Neighborhood Overlay		

SEE TEXT OF ZONING ORDINANCE FOR COMPLETE INFORMATION ON BULK REGULATIONS.

Where a zoning district boundary is located at the edge of a water body, that zone that applies to the land shall apply to structures and uses such as piers and commercial boating operations to the extent of the territorial jurisdiction of the town.

Where zoning district boundaries are located along the edge of a roadway and a distance is shown from such point to another zoning boundary, such distance and points shall be from the edge of the road layout. The ultimate location of such point shall be determined by survey as the line shown on this map is considered an approximation.