

TRAIL MAP of the Old Jail Lane Great Marsh Wildlife Sanctuary

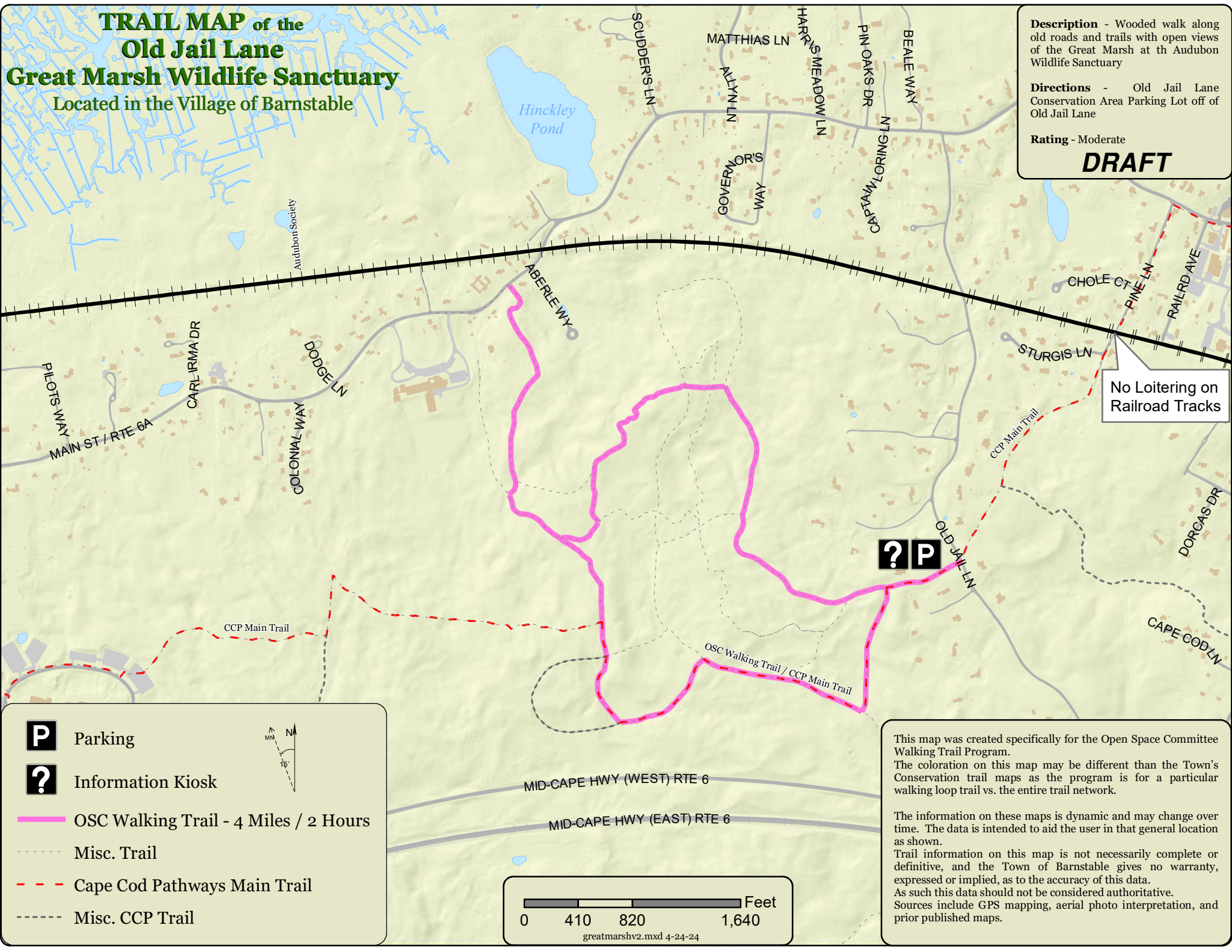
Located in the Village of Barnstable

Description - Wooded walk along old roads and trails with open views of the Great Marsh at the Audubon Wildlife Sanctuary

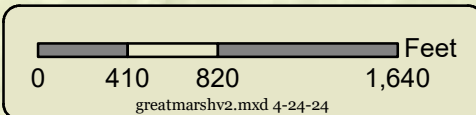
Directions - Old Jail Lane Conservation Area Parking Lot off of Old Jail Lane

Rating - Moderate

DRAFT



- P** Parking
- ?** Information Kiosk
- OSC Walking Trail - 4 Miles / 2 Hours
- - -** Misc. Trail
- - -** Cape Cod Pathways Main Trail
- - -** Misc. CCP Trail



This map was created specifically for the Open Space Committee Walking Trail Program. The coloration on this map may be different than the Town's Conservation trail maps as the program is for a particular walking loop trail vs. the entire trail network.

The information on these maps is dynamic and may change over time. The data is intended to aid the user in that general location as shown.

Trail information on this map is not necessarily complete or definitive, and the Town of Barnstable gives no warranty, expressed or implied, as to the accuracy of this data. As such this data should not be considered authoritative. Sources include GPS mapping, aerial photo interpretation, and prior published maps.