

© 2024 ALL INFORMATION THESE DOCUMENTS BY PARE CORPORATION

Prepared for The:

DRAFT IFCR
[10/31/2024]

ISSUE FOR PERMIT
NOT FOR CONSTRUCTION

TOWN OF BARNSTABLE, MASSACHUSETTS

SCUDDER'S LANE BOAT RAMP IMPROVEMENTS

BARNSTABLE, MASSACHUSETTS

NOVEMBER 2024

Drawing Index

- 0.0 COVER SHEET
- 1.0 GENERAL NOTES
- 2.0 OVERALL EXISTING SITE PLAN
- 2.1 OVERALL PROPOSED SITE PLAN
- 3.0 EXISTING AND PROPOSED CONDITION PLAN 1
- 3.1 EXISTING AND DEMOLITION SITE PLAN
- 3.2 PROPOSED SITE PLAN
- 4.0 PROPOSED DETAILS
- 4.1 PROPOSED DETAILS 2
- 4.2 PROPOSED DETAILS 3
- 5.0 RESTORATION PLAN



LOCUS PLAN
SCALE: 1" = 2000'



AERIAL PLAN
SCALE: 1" = 400'

Prepared by:

PARE CORPORATION

Foxboro, Massachusetts



10/31/2024 10:45 AM I:\Projects\2024\Barnstable\SCUDDER'S LANE BOAT RAMP IMPROVEMENTS\Drawings\00-Cover Sheet.dwg

GENERAL NOTES:

- 1. FOR THE PURPOSE OF THIS PROJECT OWNER - TOWN OF BARNSTABLE 367 MAIN STREET HYANNIS, MA 02801 ENGINEER - PARE CORPORATION 10 LINCOLN ROAD, SUITE 210 FOXBORO, MA 02035 CONTACT - TODD TURCOTTE, P.E., VICE PRESIDENT... 25. SHOP AND ERECTION DRAWINGS FOR ALL WORK SHALL BE SUBMITTED TO THE ENGINEER FOR REVIEW AND APPROVAL AS PER THE SPECIFICATIONS...

CONCRETE NOTES:

- 1. CONCRETE WORK SHALL CONFORM TO THE LATEST EDITION OF ACI 318 - "BUILDING CODE REQUIREMENTS FOR STRUCTURAL CONCRETE" AND 780 CMR - MASSACHUSETTS STATE BUILDING CODE. 2. CONCRETE SHALL BE PROPORTIONED, MIXED, AND PLACED UNDER THE SUPERVISION OF THE APPROVED TESTING AGENCY...

CONCRETE REINFORCING NOTES:

- 1. REINFORCING BARS SHALL BE DETAILED IN ACCORDANCE WITH ACI 315-"DETAILS AND DETAILING OF CONCRETE REINFORCEMENT" AND THE MASSACHUSETTS STATE BUILDING CODE. 2. COMPLETE SHOP DRAWINGS AND SCHEDULES OF ALL REINFORCING SHALL BE PREPARED BY THE CONTRACTOR AND SUBMITTED TO THE ENGINEER FOR APPROVAL PRIOR TO COMMENCEMENT OF THAT PORTION OF THE WORK...

LUMBER NOTES:

- 1. ALL NEW LUMBER SHALL BE SOUTHERN YELLOW PINE NO. 1 OR BETTER (lb=1,200 PSI). 2. NEW LUMBER SHALL BE PRESSURE TREATED TO AWP STANDARD UC4B UNLESS OTHERWISE NOTED. 3. ALL FIELD CUTS AND BOLT HOLES SHALL BE PROTECTED IN ACCORDANCE WITH AWP STANDARD M4.

SPILL PREVENTION CONTROL NOTES:

- 1. SPILLS AND LEAKS SHALL BE AVOIDED THROUGH FREQUENT INSPECTION OF EQUIPMENT AND MATERIAL STORAGE AREAS, AND SHALL BE REMEDIATED AND REPAIRED AS NECESSARY. 2. HAZARDOUS MATERIAL STORAGE TO BE PLACED ONLY IN DESIGNATED AREAS. MATERIAL STORAGE AREAS SHALL BE ROUTINELY INSPECTED FOR LEAKY CONTAINERS, OPEN CONTAINERS, OR IMPROPER STORAGE TECHNIQUES THAT MAY LEAD TO SPILLS OR LEAKS...

EROSION CONTROL NOTES:

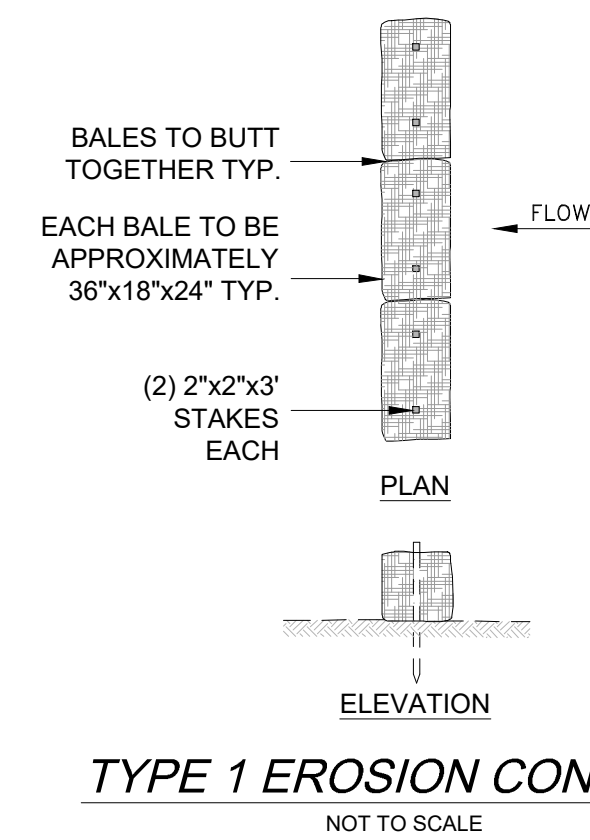
- 1. EROSION AND SEDIMENT CONTROLS TO BE INSTALLED AS REQUIRED FOR AND AS DETERMINED BY THE ENGINEER, OWNER, OR REGULATORY AGENCY. 2. CONTRACTOR SHALL MAINTAIN ALL EROSION CONTROL DEVICES FOR THE DURATION OF THE PROJECT. 3. CONTRACTOR SHALL PREVENT SEDIMENT FROM ENTERING THE WATERWAY VIA DISCHARGES THROUGH ANY DRAINAGE STRUCTURES OR RUNOFF FROM WITHIN THE LIMITS OF WORK...

CONCRETE NOTES:

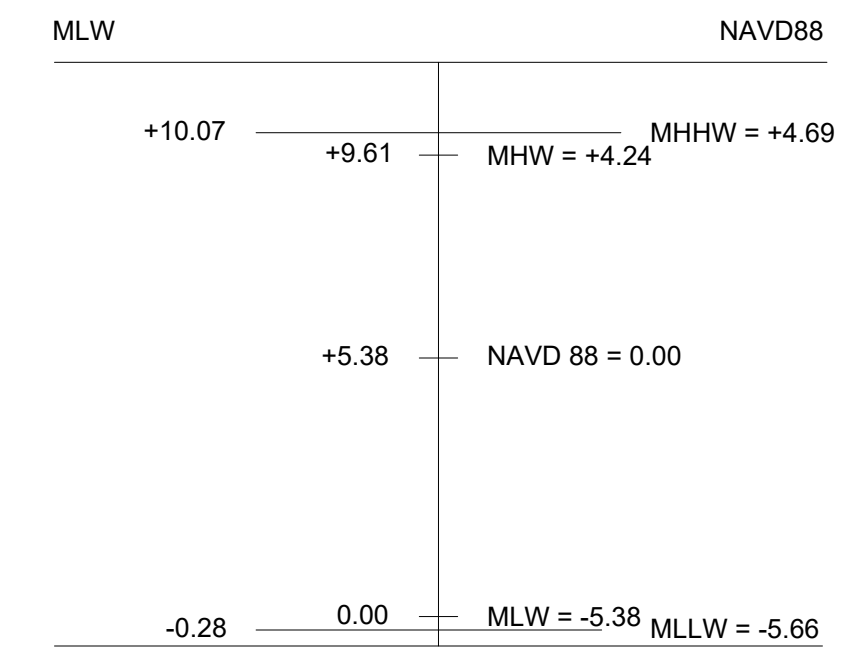
- 1. PRIOR TO PROJECT COMMENCEMENT, NOTIFY AND COORDINATE WITH ALL STATE, LOCAL AND FEDERAL AUTHORITIES AS REQUIRED. 2. MOBILIZE CONSTRUCTION EQUIPMENT AND PERSONNEL TO THE SITE. UTILIZATION OF A STAGING AREA WILL BE COORDINATED WITH THE TOWN OF BARNSTABLE AS APPROPRIATE AND AS NECESSARY.

LEGEND

- I.R. IRON ROD
C.B. CONCRETE BOUND
M.H.W MEAN HIGH WATER
D.H. DRILL HOLE
WM WATER METER
W/S WATERSTOP
S.M.H SEWER MANHOLE
G.V GAS VALVE
L.P LAMP POST
SCO SEWER CLEAN OUT
S S SEWER LINE
W WATER LINE
G GAS LINE
OE OVERHEAD ELECTRIC LINE
TW TOP OF SEAWALL
BWG BASE OF WALL SEA BED
BWG-2+43 ELEVATION NEGATIVE -2+43
6+20 PROPOSED SPOT ELEVATION



TYPE 1 EROSION CONTROL NOT TO SCALE

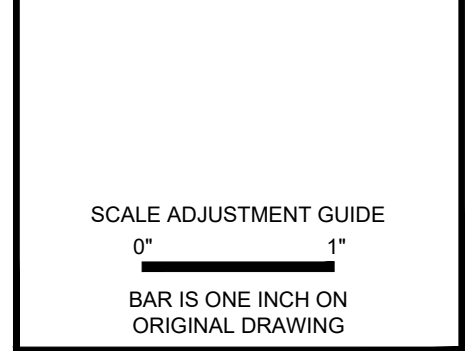


DATUM ELEVATION INFORMATION

STATION ID: #
BARNSTABLE, MA
SEA LEVEL RISE PREDICTIONS
CY2050: +1.81 FT.
CY2075: +3.92 FT.

FETCH = 1.18 mi = 1.899 km

WAVE HEIGHT = 2.348 ft



DRAFT IFCR [10/31/2024]

Table with 2 columns: REVISIONS, and rows A through S detailing revision dates and descriptions (e.g., 02/28/22 10% CONCEPT IFCR, 03/18/22 INC. COMMENTS).

GENERAL NOTES

Table with 2 columns: PROJECT NO.: 21236.00, DATE: NOVEMBER 2024, SCALE: AS NOTED, DESIGNED BY: SL, CHECKED BY: CCH, DRAWN BY: LMC, APPROVED BY: CCH, DRAWING TITLE: GENERAL NOTES.

DRAWING NO.: 1.0 SHEET NO. 2 OF 11

ISSUED FOR PERMIT NOT FOR CONSTRUCTION

Vertical text on the left edge: 10/31/2024 10:12:23 AM C:\Barnstable-Scudder_Lane_Boat_Ramp-Improvements-Station... 2024 10/31/2024

Vertical text on the right edge: © 2022 ALL INFORMATION THESE DOCUMENTS OF PARE CORPORATION



© 2022 ALL INFORMATION THESE DOCUMENTS BY PARE CORPORATION

SCALE ADJUSTMENT GUIDE
0" 1"
BAR IS ONE INCH ON ORIGINAL DRAWING

SCUDDER'S LANE BOAT RAMP IMPROVEMENTS BARNSTABLE, MASSACHUSETTS

DRAFT IFCR
(10/31/2024)

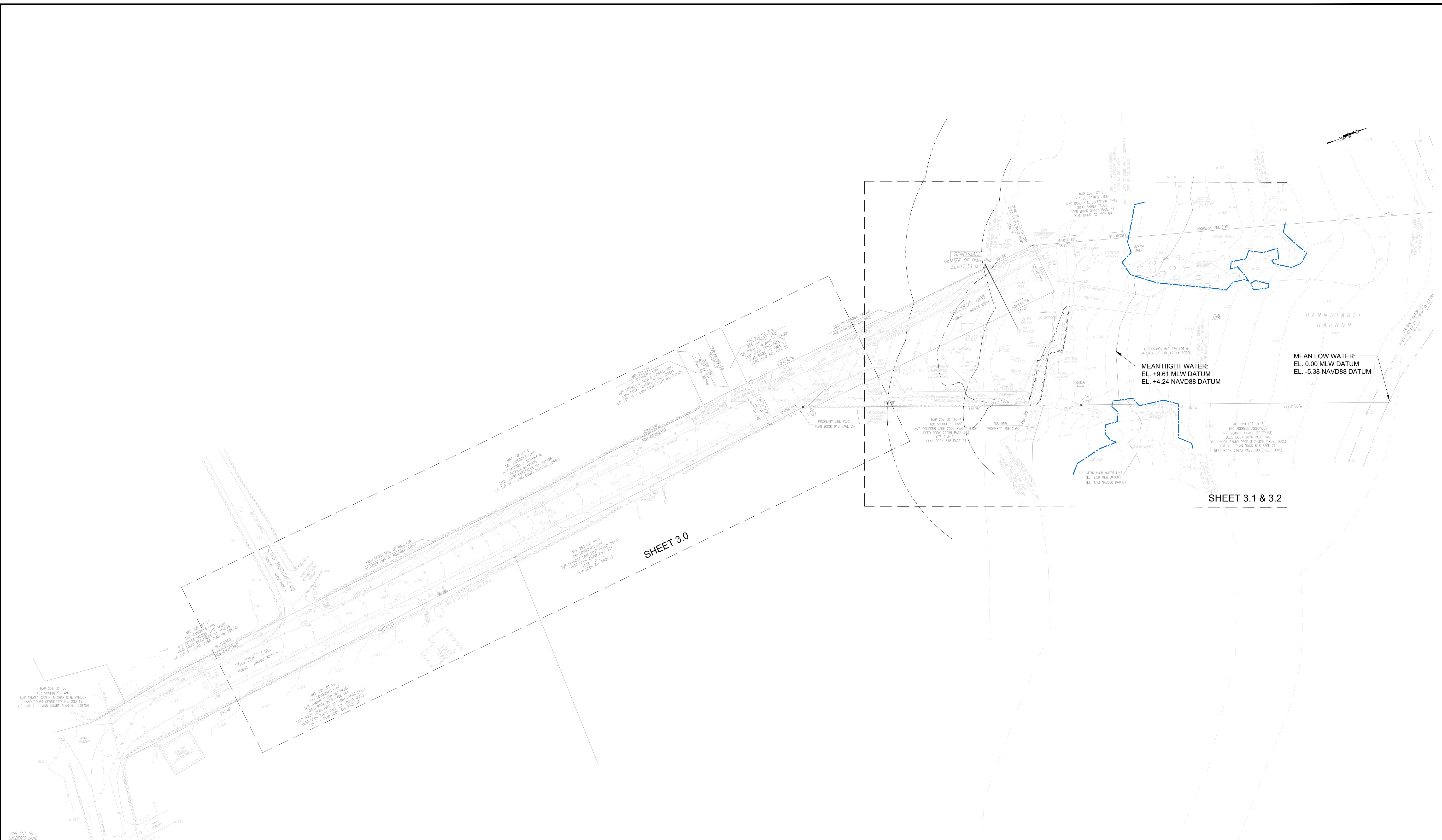
REVISIONS:

A	02/28/22	10% CONCEPT IFR
B	03/18/22	INC. COMMENTS
C	08/22/22	INC. COMMENTS
D	07/07/22	INC. COMMENTS
E	07/25/22	INC. COMMENTS
F	08/22/22	30% CLIENT IFR
G	08/22/22	INC. COMMENTS
H	08/24/22	INC. COMMENTS
I	09/12/22	INC. COMMENTS
J	09/20/22	INC. COMMENTS
K	09/22/22	INC. COMMENTS
L	09/27/22	INC. COMMENTS
M	11/28/22	INC. COMMENTS
N	01/27/23	INC. COMMENTS
O	02/07/23	INC. COMMENTS
P	03/17/23	INC. COMMENTS
Q	04/14/23	INC. COMMENTS
R	05/02/23	INC. COMMENTS
S	11/07/24	IFP

PROJECT NO.: 21236.00
 DATE: NOVEMBER 2024
 SCALE: AS NOTED
 DESIGNED BY: SL
 CHECKED BY: CCH
 DRAWN BY: LMC
 APPROVED BY: CCH

DRAWING TITLE:
**OVERALL
 EXISTING
 SITE PLAN**

DRAWING NO.:
2.0
 SHEET NO. 3 OF 11



EXISTING OVERALL SITE PLAN
 SCALE: 1"=30'-0"

ISSUED FOR PERMIT
 NOT FOR CONSTRUCTION



© 2022 ALL INFORMATION THESE DOCUMENTS BY PARE CORPORATION

SCALE ADJUSTMENT GUIDE
0" 1"
BAR IS ONE INCH ON ORIGINAL DRAWING

SCUDDER'S LANE BOAT RAMP IMPROVEMENTS BARNSTABLE, MASSACHUSETTS

DRAFT IFCR
(10/31/2024)

REVISIONS:

A	02/28/22	10% CONCEPT IFR
B	03/18/22	INC. COMMENTS
C	08/22/22	INC. COMMENTS
D	07/07/22	INC. COMMENTS
E	07/25/22	INC. COMMENTS
F	08/22/22	30% CLIENT IFR
G	08/22/22	INC. COMMENTS
H	08/24/22	INC. COMMENTS
I	09/12/22	INC. COMMENTS
J	09/20/22	INC. COMMENTS
K	09/22/22	INC. COMMENTS
L	09/27/22	INC. COMMENTS
M	11/28/22	INC. COMMENTS
N	01/27/23	INC. COMMENTS
O	02/07/23	INC. COMMENTS
P	03/17/23	INC. COMMENTS
Q	04/14/23	INC. COMMENTS
R	05/02/23	INC. COMMENTS
S	11/07/24	IFP

PROJECT NO.: 21236.00
 DATE: NOVEMBER 2024
 SCALE: AS NOTED
 DESIGNED BY: SL
 CHECKED BY: CCH
 DRAWN BY: LMC
 APPROVED BY: CCH

DRAWING TITLE:

OVERALL PROPOSED SITE PLAN

DRAWING NO.: 2.1
SHEET NO. 4 OF 11



OVERALL SITE PLAN
SCALE: 1"=30'-0"

Scale: 1"=30'
0 15' 30' 60'

ISSUED FOR PERMIT
NOT FOR CONSTRUCTION



© 2022 ALL INFORMATION THESE DOCUMENTS BY PARE CORPORATION

SCALE ADJUSTMENT GUIDE
0" 1"
BAR IS ONE INCH ON ORIGINAL DRAWING

SCUDDER'S LANE BOAT RAMP IMPROVEMENTS

BARNSTABLE, MASSACHUSETTS

DRAFT IFCR
[10/31/2024]

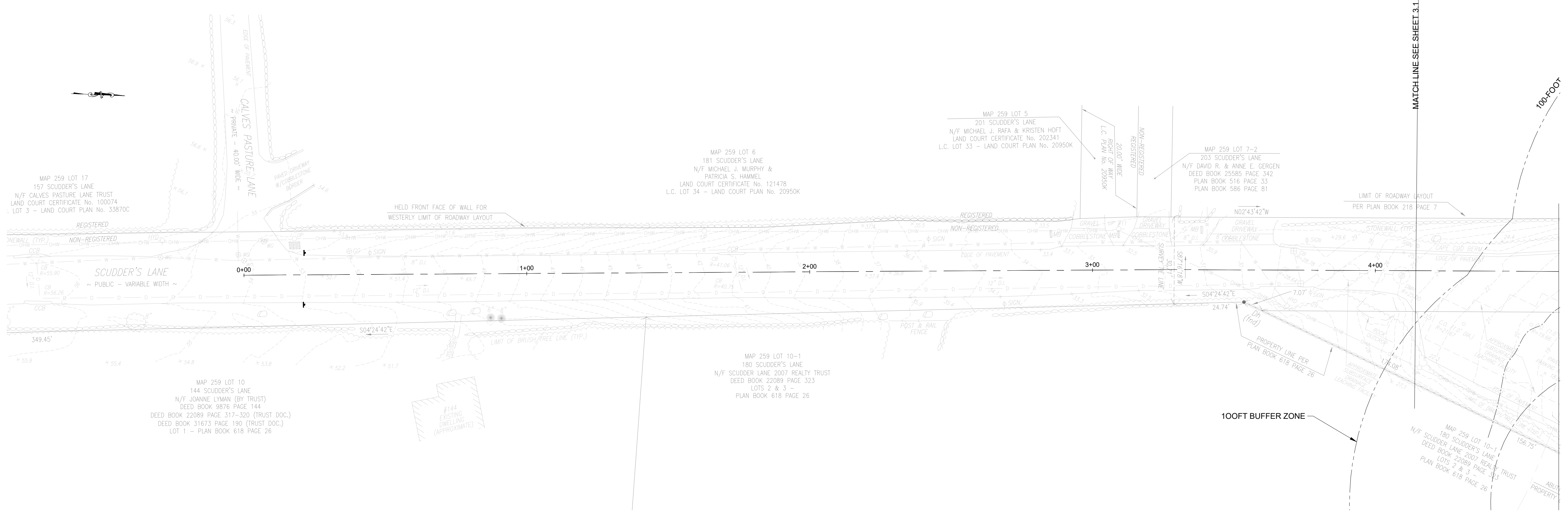
REVISIONS:

A	02/28/22	10% CONCEPT IFR
B	03/19/22	INC. COMMENTS
C	08/22/22	INC. COMMENTS
D	07/07/22	INC. COMMENTS
E	07/25/22	INC. COMMENTS
F	08/22/22	30% CLIENT IFR
G	08/22/22	INC. COMMENTS
H	08/24/22	INC. COMMENTS
I	08/19/22	INC. COMMENTS
J	08/20/22	INC. COMMENTS
K	08/22/22	INC. COMMENTS
L	08/27/22	INC. COMMENTS
M	11/28/22	INC. COMMENTS
N	01/27/23	INC. COMMENTS
O	02/07/23	INC. COMMENTS
P	03/17/23	INC. COMMENTS
Q	04/14/23	INC. COMMENTS
R	05/02/23	INC. COMMENTS
S	11/07/24	IFP

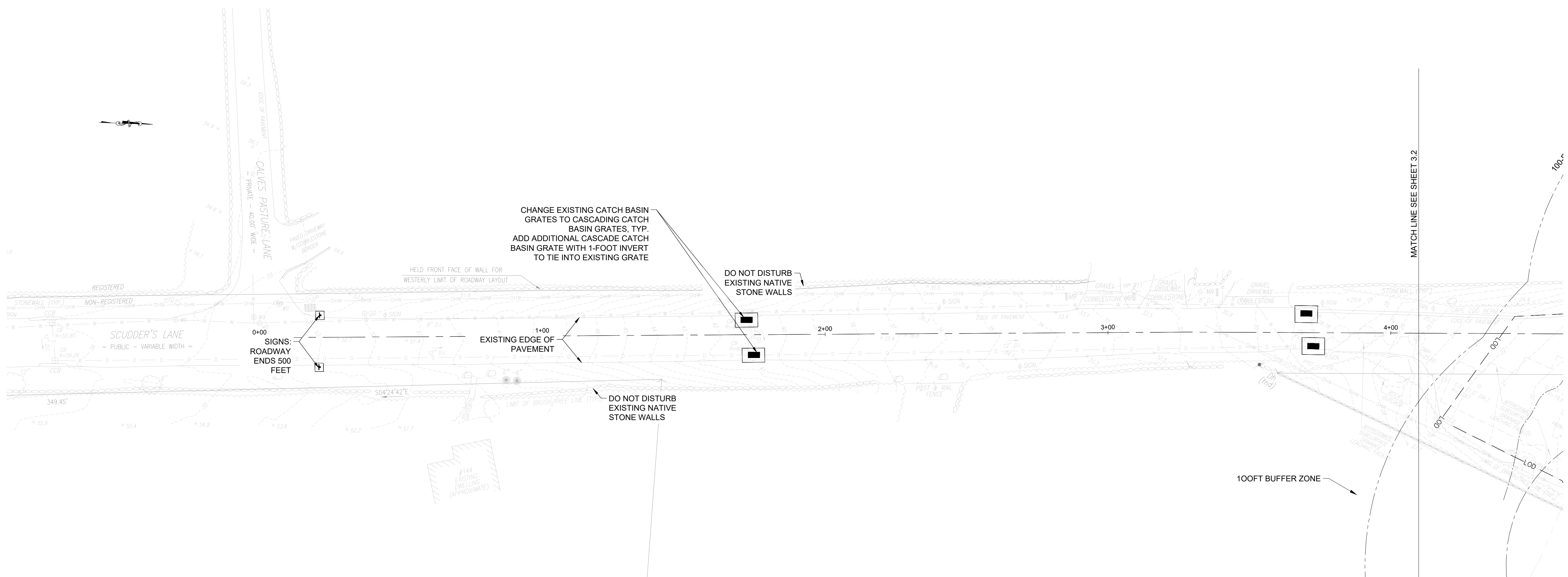
PROJECT NO.: 21236.00
 DATE: NOVEMBER 2024
 SCALE: AS NOTED
 DESIGNED BY: SL
 CHECKED BY: CCH
 DRAWN BY: LMC
 APPROVED BY: CCH

DRAWING TITLE:
 EXISTING AND PROPOSED
 CONDITIONS PLAN 1

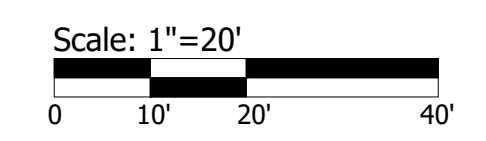
DRAWING NO.:
3.0
 SHEET NO. 5 OF 11



EXISTING CONDITIONS PLAN STA 0+00 TO 4+00
 SCALE: 1"=20'-0"



PROPOSED CONDITIONS PLAN STA 0+00 TO 4+00
 SCALE: 1"=20'-0"



ISSUED FOR PERMIT
 NOT FOR CONSTRUCTION

NOTE:
 PROJECT DATUM ELEVATION IS MEAN LOW
 WATER. SEE ELEVATION GRAPH SHEET 1.0



© 2022 ALL INFORMATION THESE DOCUMENTS BY PARE CORPORATION

SCALE ADJUSTMENT GUIDE
0" 1"
BAR IS ONE INCH ON ORIGINAL DRAWING

SCUDDER'S LANE BOAT RAMP IMPROVEMENTS BARNSTABLE, MASSACHUSETTS

DRAFT IFCR
[10/31/2024]

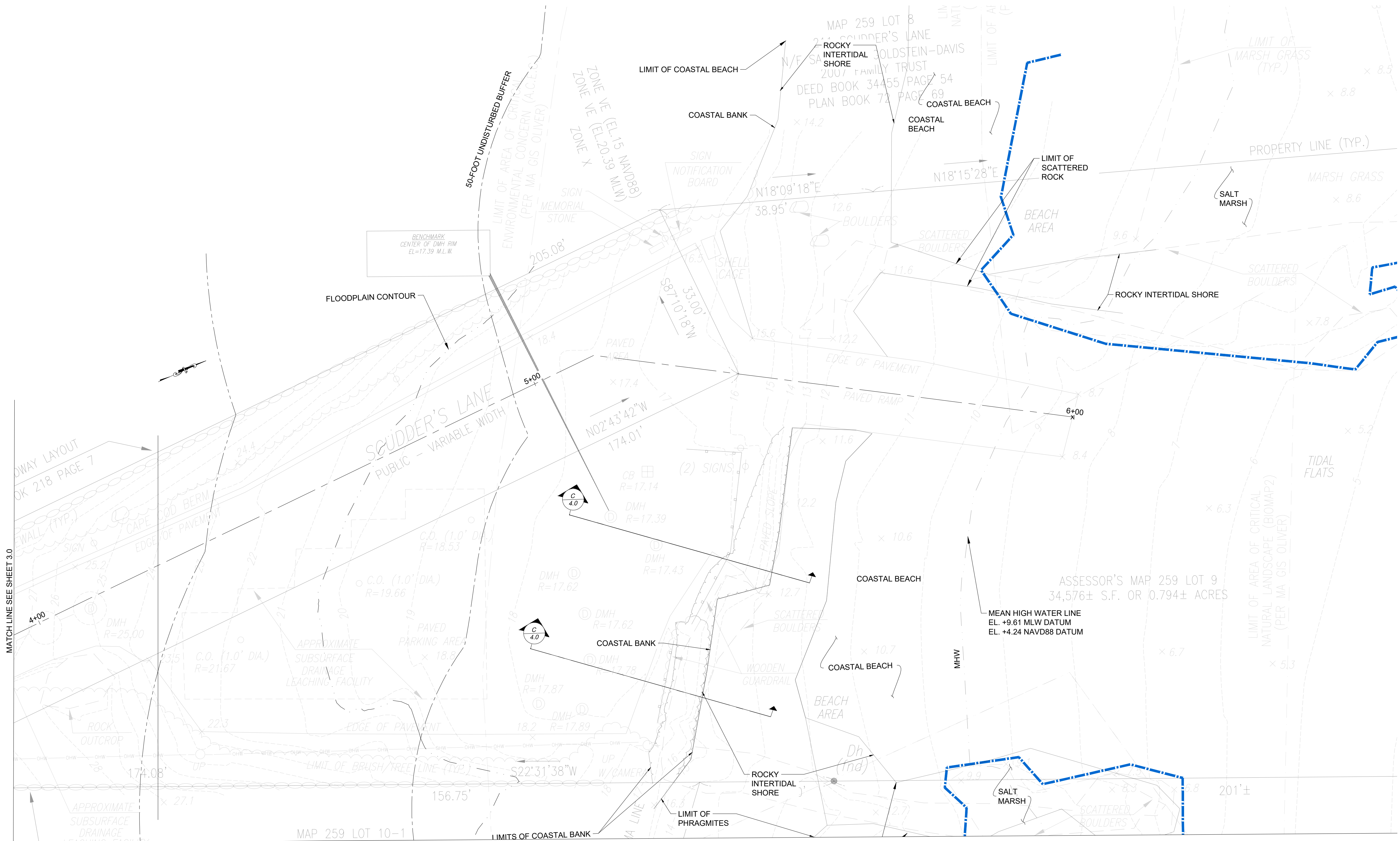
REVISIONS:

A	02/28/22	10% CONCEPT IFR
B	03/18/22	INC. COMMENTS
C	08/22/22	INC. COMMENTS
D	07/07/22	INC. COMMENTS
E	07/29/22	INC. COMMENTS
F	08/22/22	30% CLIENT IFR
G	08/22/22	INC. COMMENTS
H	08/24/22	INC. COMMENTS
I	09/12/22	INC. COMMENTS
J	09/20/22	INC. COMMENTS
K	09/22/22	INC. COMMENTS
L	09/27/22	INC. COMMENTS
M	11/28/22	INC. COMMENTS
N	01/27/23	INC. COMMENTS
O	02/07/23	INC. COMMENTS
P	03/17/23	INC. COMMENTS
Q	04/14/23	INC. COMMENTS
R	05/02/23	INC. COMMENTS
S	11/07/24	IFP

PROJECT NO.: 21236.00
 DATE: NOVEMBER 2024
 SCALE: AS NOTED
 DESIGNED BY: SL
 CHECKED BY: CCH
 DRAWN BY: LMC
 APPROVED BY: CCH

DRAWING TITLE:
**EXISTING AND
 AND DEMOLITION
 SITE PLAN**

DRAWING NO.:
3.1
 SHEET NO. 5 OF 11



EXISTING SITE PLAN STA 4+00 TO 6+00
 SCALE: 1"=10'-0"

NOTE:
 RESOURCE AREA BOUNDARIES WERE DELINEATED BY LAUREN GLUCK,
 P.W.S., AND ERIKA KLINGHAMMER OF PARE CORPORATION ON JULY 14, 2022.

Scale: 1"=10'
 0 5' 10' 20'

**ISSUED FOR PERMIT
 NOT FOR CONSTRUCTION**



© 2022 ALL INFORMATION THESE DOCUMENTS BY PARE CORPORATION

SCALE ADJUSTMENT GUIDE
0" 1"
BAR IS ONE INCH ON ORIGINAL DRAWING

SCUDDER'S LANE BOAT RAMP IMPROVEMENTS

BARNSTABLE, MASSACHUSETTS

DRAFT IFCR
[10/31/2024]

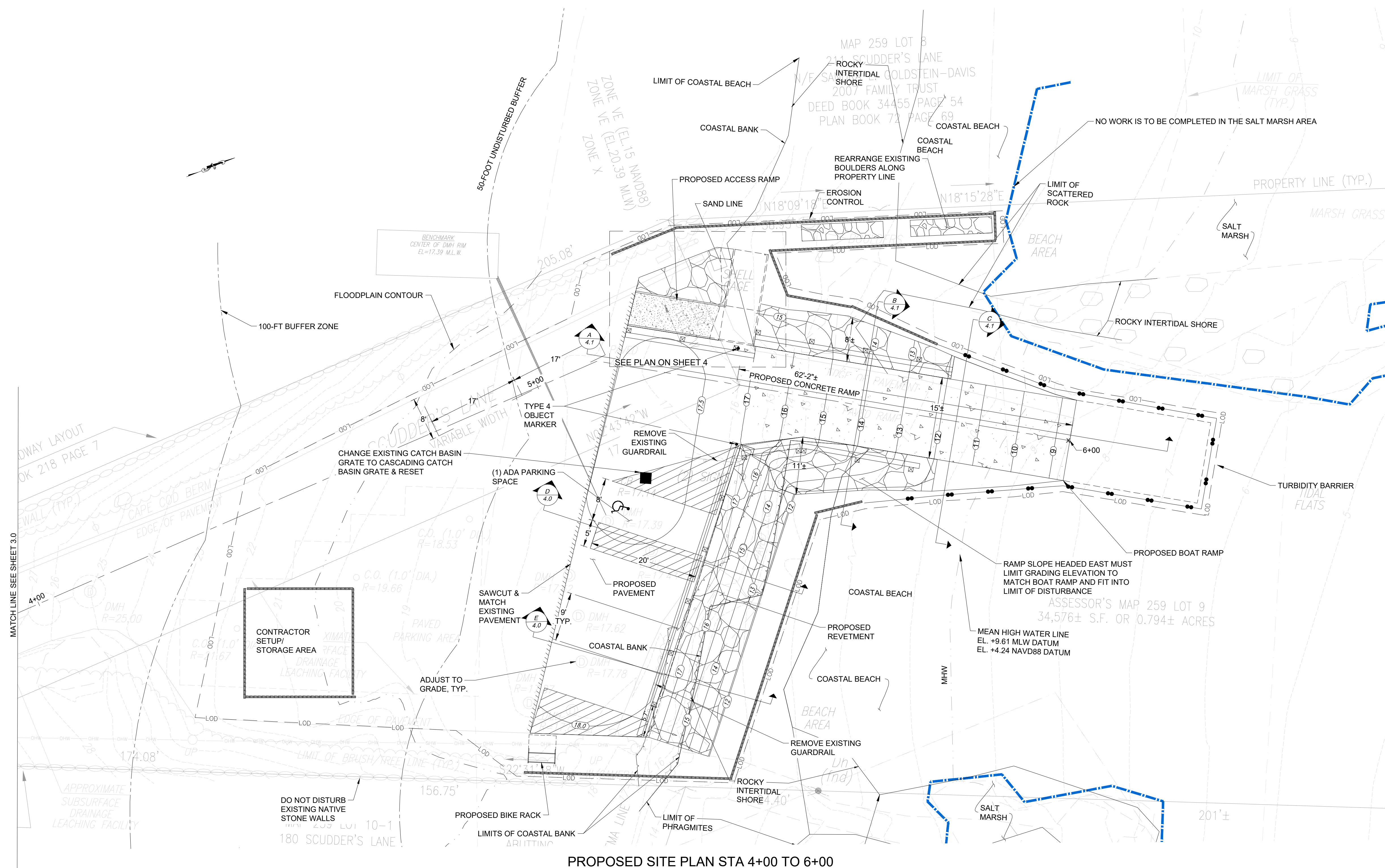
REVISIONS:

A	02/28/22	10% CONCEPT IFR
B	03/18/22	INC. COMMENTS
C	08/22/22	INC. COMMENTS
D	07/07/22	INC. COMMENTS
E	07/25/22	INC. COMMENTS
F	08/22/22	30% CLIENT IFR
G	08/22/22	INC. COMMENTS
H	08/24/22	INC. COMMENTS
I	08/12/22	INC. COMMENTS
J	09/20/22	INC. COMMENTS
K	08/22/22	INC. COMMENTS
L	08/27/22	INC. COMMENTS
M	11/28/22	INC. COMMENTS
N	01/27/23	INC. COMMENTS
O	02/07/23	INC. COMMENTS
P	03/17/23	INC. COMMENTS
Q	04/14/23	INC. COMMENTS
R	05/02/23	INC. COMMENTS
S	11/07/24	IFP

PROJECT NO.: 21236.00
 DATE: NOVEMBER 2024
 SCALE: AS NOTED
 DESIGNED BY: SL
 CHECKED BY: CCH
 DRAWN BY: LMC
 APPROVED BY: CCH

DRAWING TITLE:
 EXISTING AND PROPOSED
 CONDITIONS PLAN 3

DRAWING NO.:
3.2
 SHEET NO. 7 OF 11



PROPOSED SITE PLAN STA 4+00 TO 6+00
 SCALE: 1"=10'-0"

NOTE:
 1. THE VERTICAL DATUM IS MEAN LOW WATER.

Scale: 1"=10'
 0 5' 10' 20'

ISSUED FOR PERMIT
 NOT FOR CONSTRUCTION



© 2022 ALL INFORMATION THESE DOCUMENTS BY PARE CORPORATION

SCALE ADJUSTMENT GUIDE
0" 1"
BAR IS ONE INCH ON ORIGINAL DRAWING

SCUDDER'S LANE BOAT RAMP IMPROVEMENTS

BARNSTABLE, MASSACHUSETTS

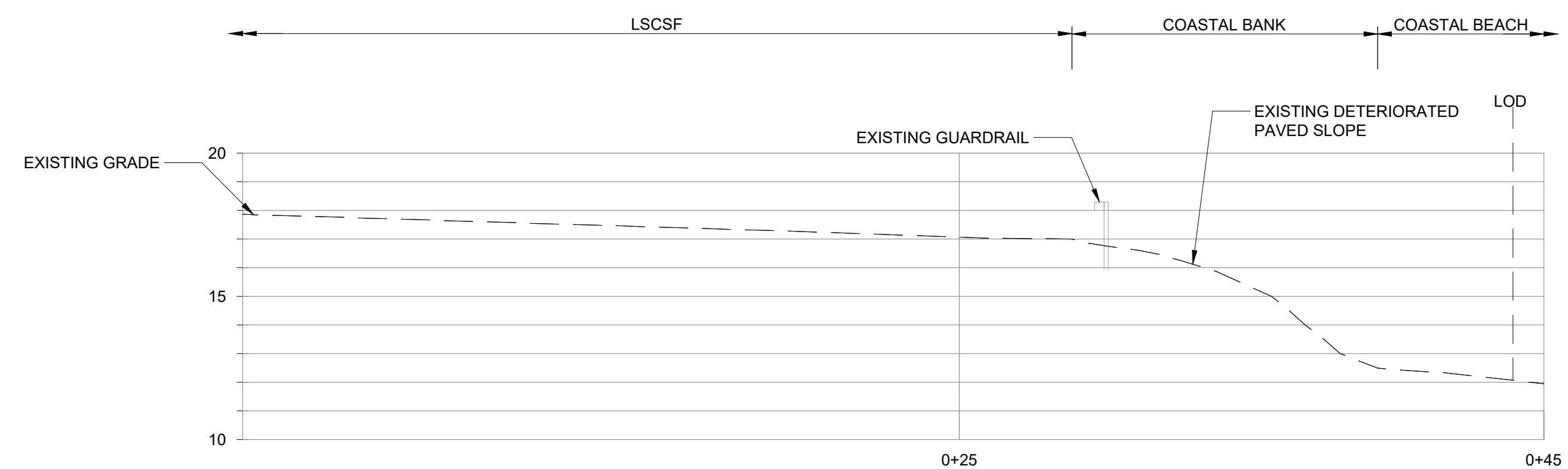
DRAFT IFCR
[10/31/2024]

REVISIONS:	
A	02/28/22 10% CONCEPT IFR
B	03/18/22 INC. COMMENTS
C	08/22/22 INC. COMMENTS
D	07/07/22 INC. COMMENTS
E	07/25/22 INC. COMMENTS
F	08/22/22 30% CLIENT IFR
G	08/22/22 INC. COMMENTS
H	08/24/22 INC. COMMENTS
I	09/12/22 INC. COMMENTS
J	09/20/22 INC. COMMENTS
K	08/22/22 INC. COMMENTS
L	09/27/22 INC. COMMENTS
M	11/28/22 INC. COMMENTS
N	01/27/23 INC. COMMENTS
O	02/07/23 INC. COMMENTS
P	03/17/23 INC. COMMENTS
Q	04/14/23 INC. COMMENTS
R	05/02/23 INC. COMMENTS
S	11/07/24 IFF

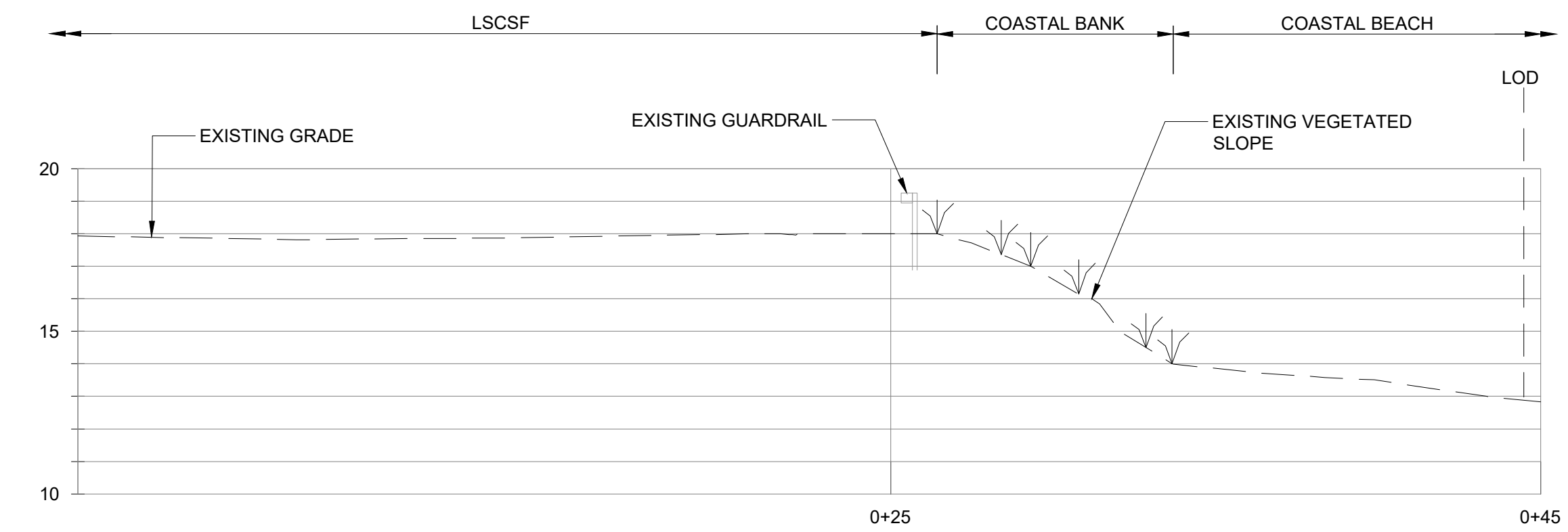
PROJECT NO.: 21236.00
 DATE: NOVEMBER 2024
 SCALE: AS NOTED
 DESIGNED BY: SL
 CHECKED BY: CCH
 DRAWN BY: LMC
 APPROVED BY: CCH

DRAWING TITLE:
PROPOSED DETAILS

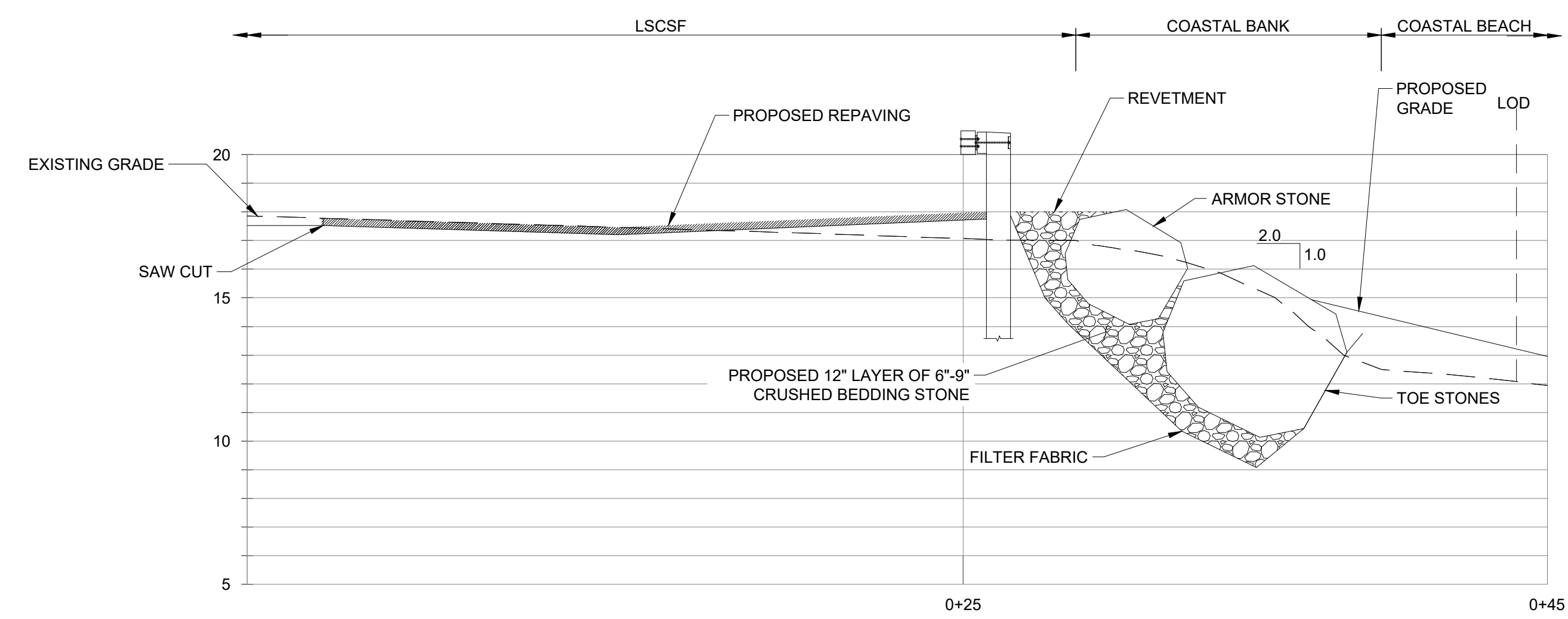
DRAWING NO.:
4.0
SHEET NO. 8 OF 11



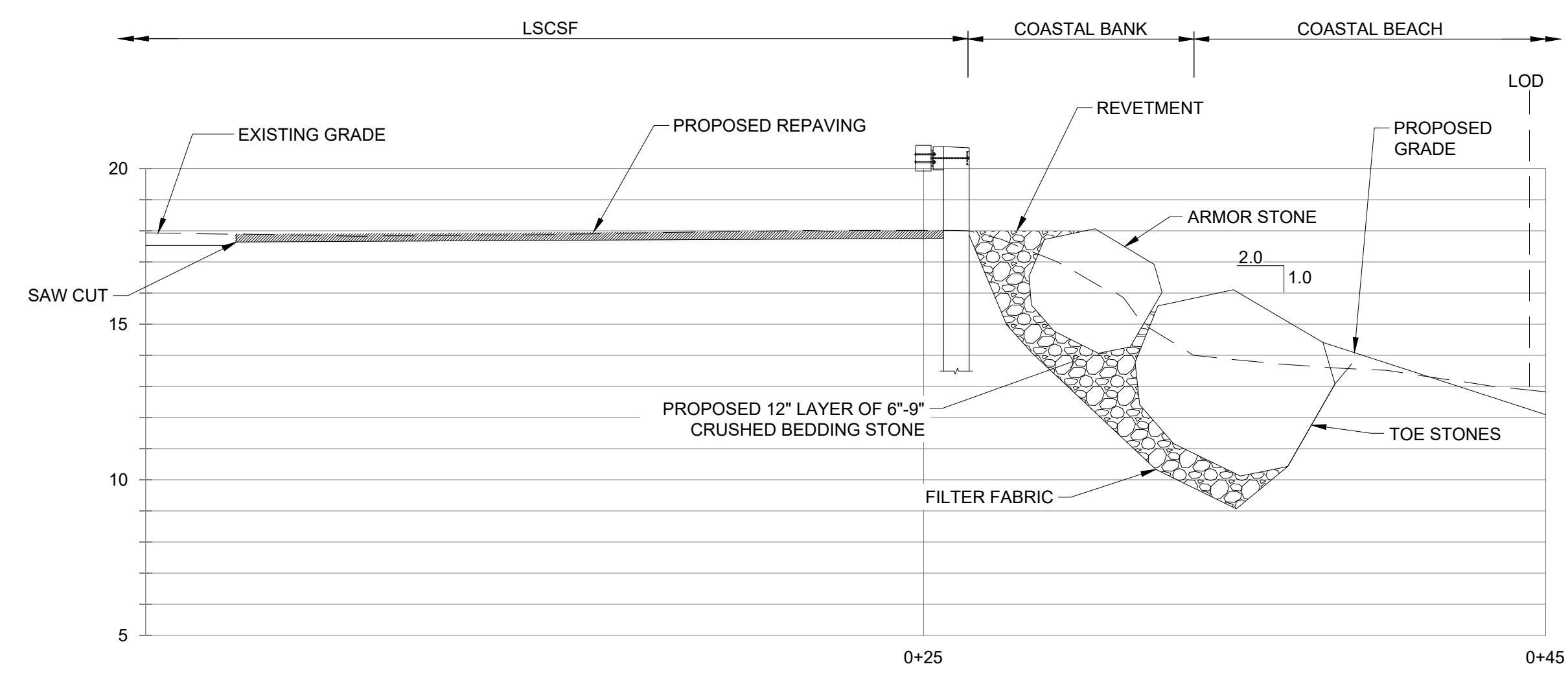
D 3.1 EXISTING REVETMENT SECTION
SCALE: 1"=4'



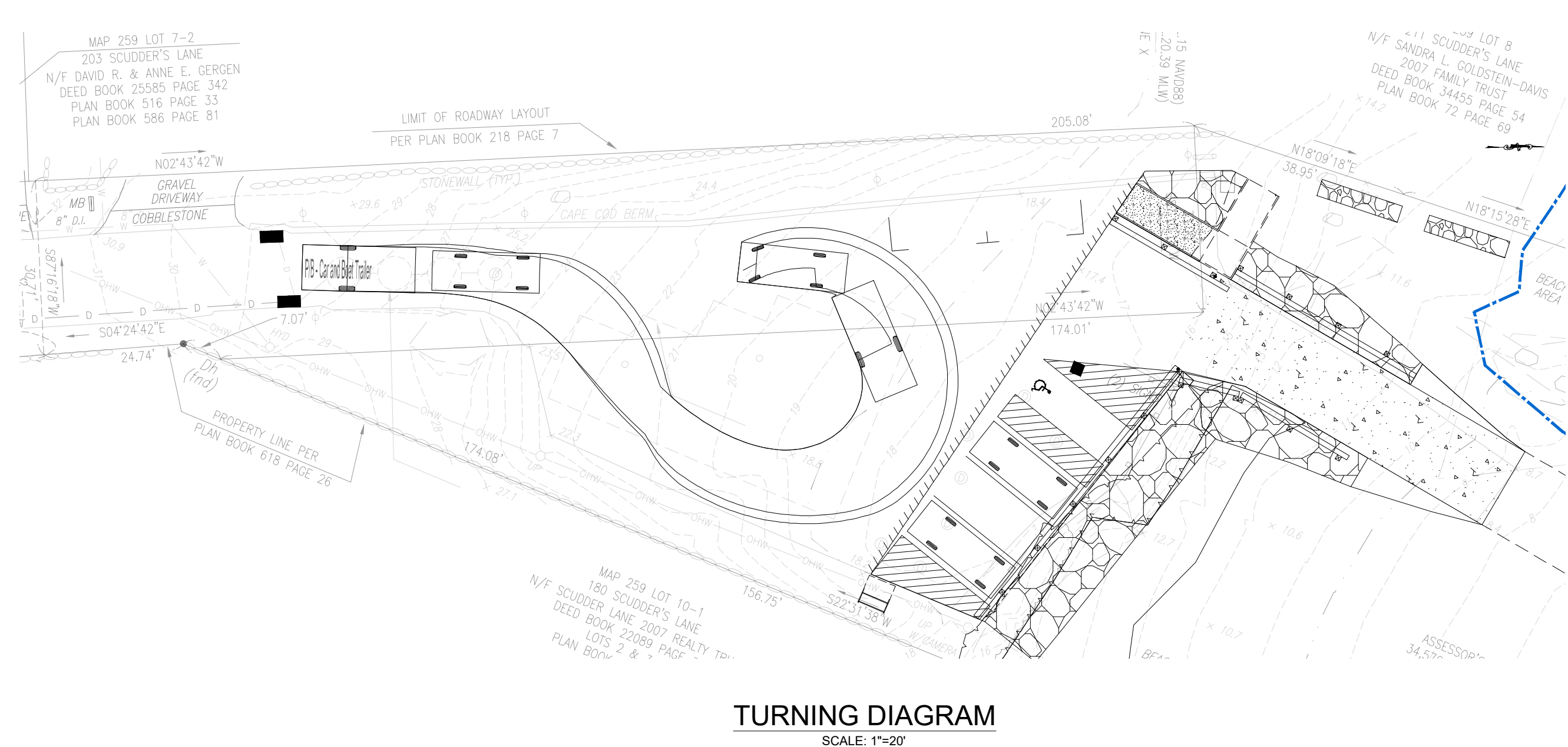
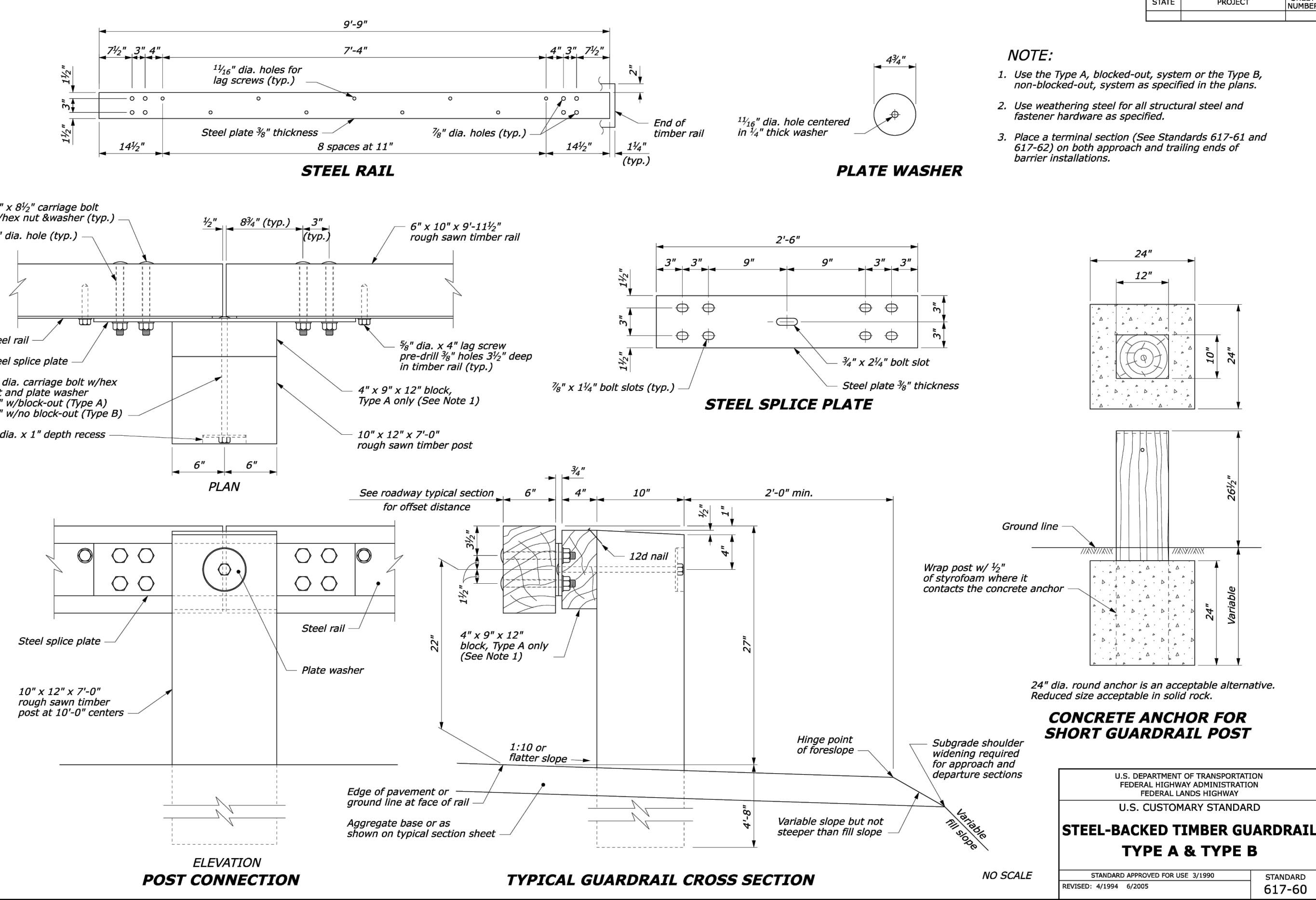
E 3.1 EXISTING REVETMENT SECTION
SCALE: 1"=4'



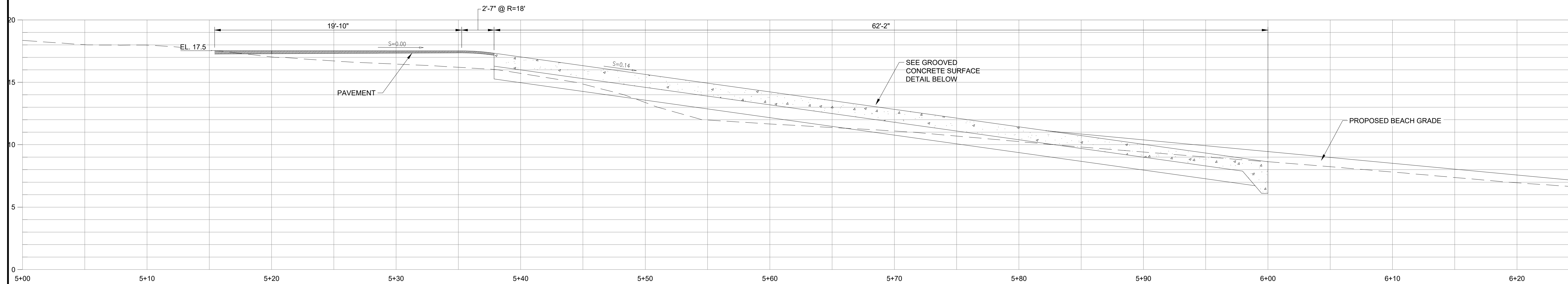
D 3.2 PROPOSED REVETMENT SECTION
SCALE: 1"=4'



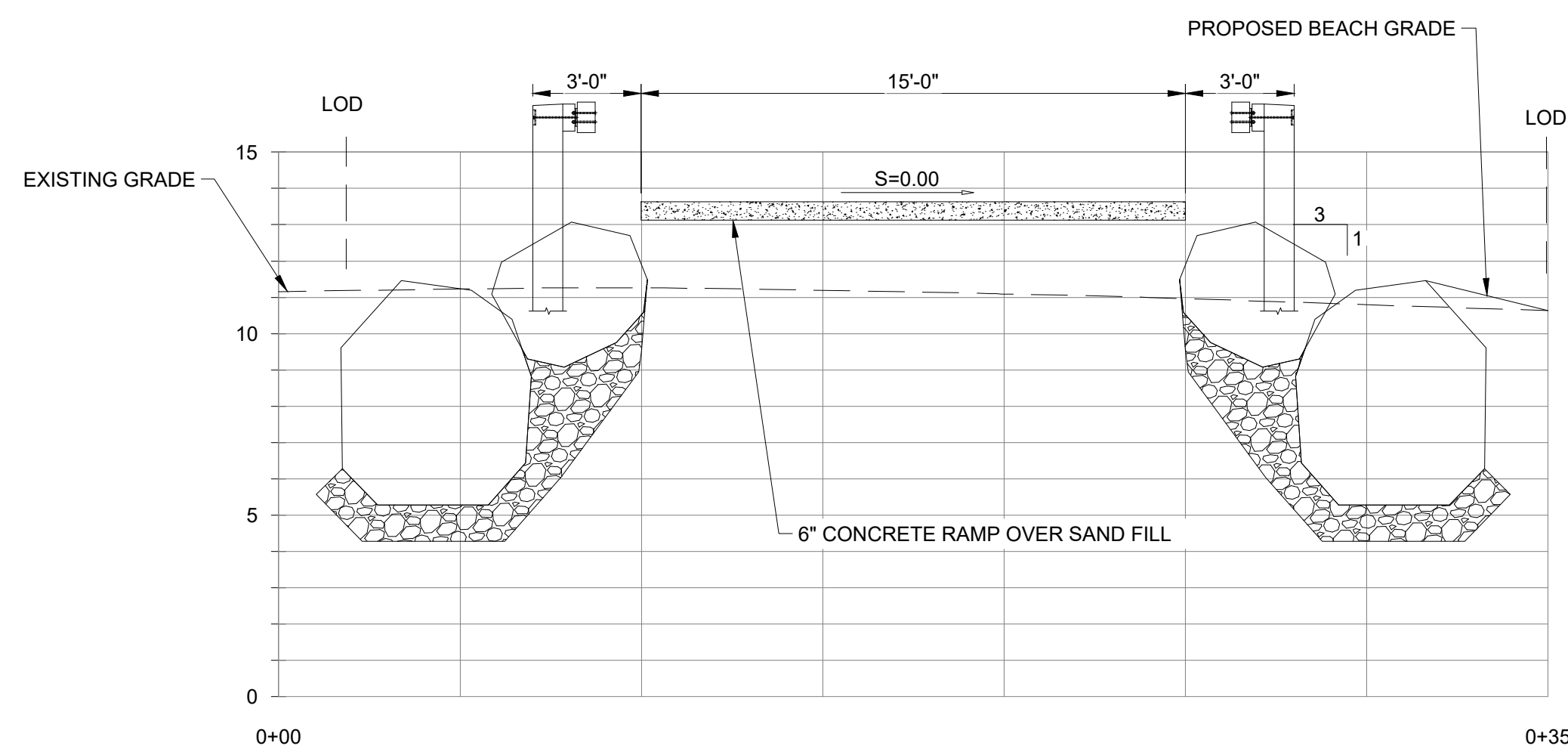
E 3.2 PROPOSED REVETMENT SECTION
SCALE: 1"=4'



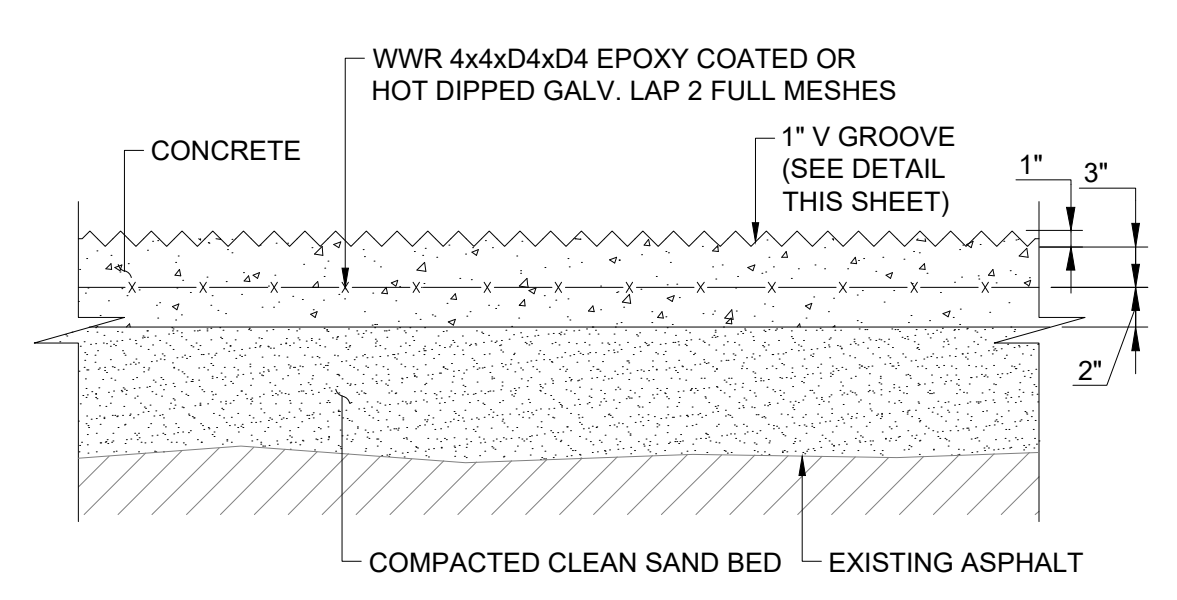
ISSUED FOR PERMIT
NOT FOR CONSTRUCTION



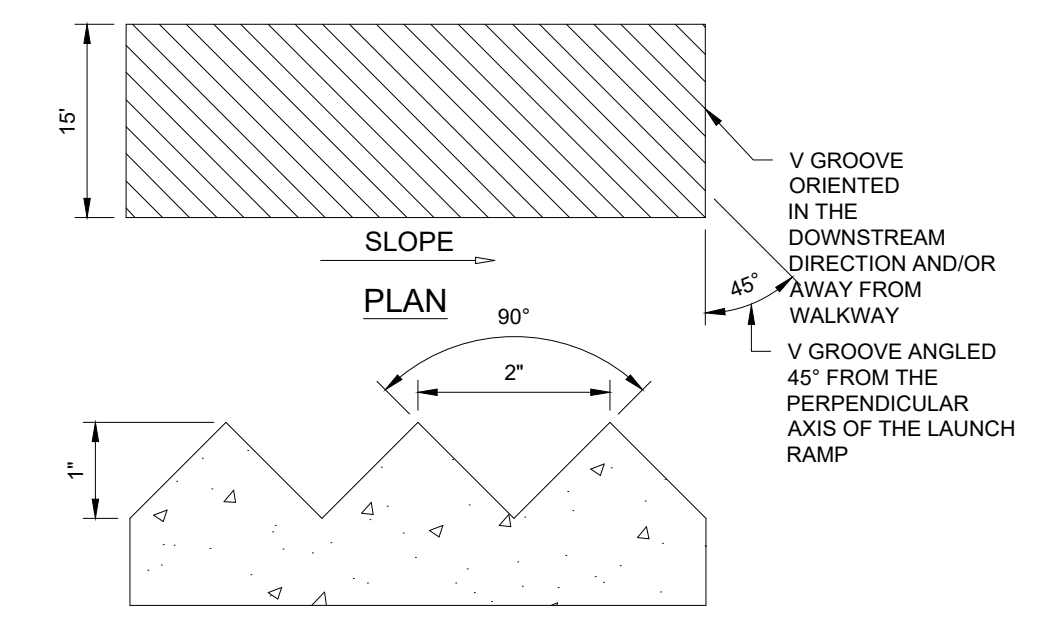
A
 3.2 PROPOSED RAMP PROFILE
 SCALE: 1"=4'



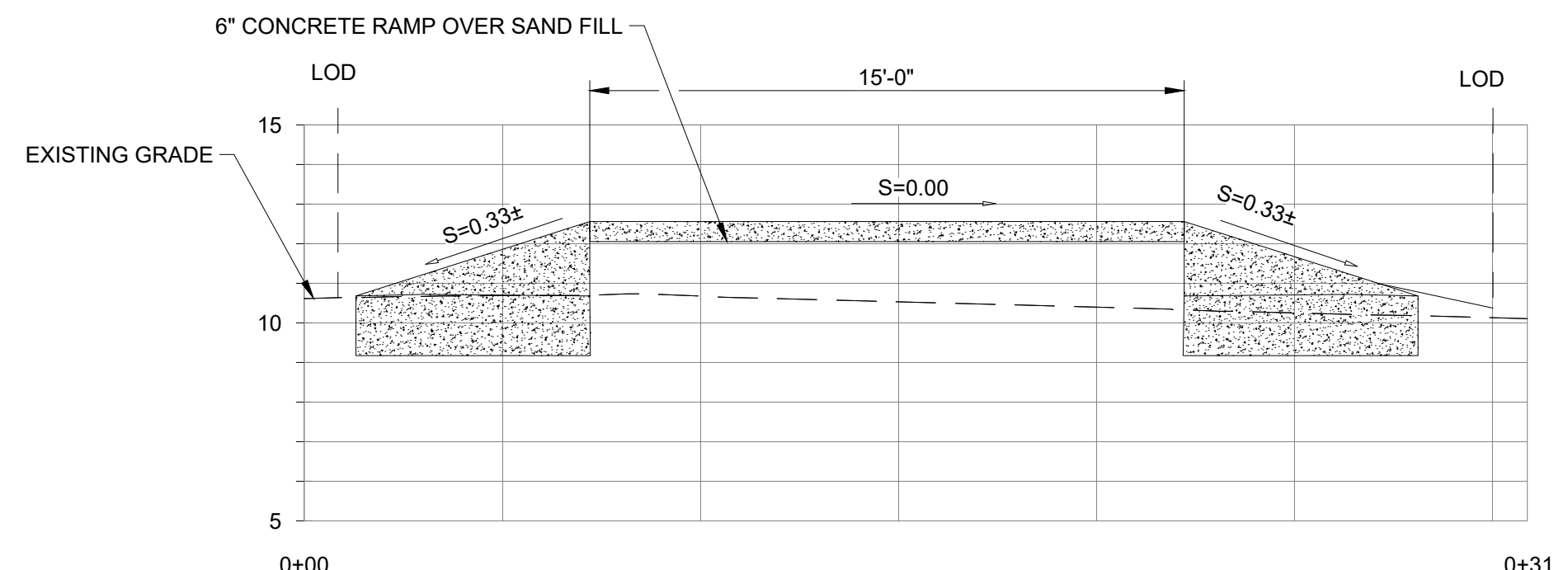
B
 3.2 PROPOSED RAMP SECTION
 SCALE: 1"=4'



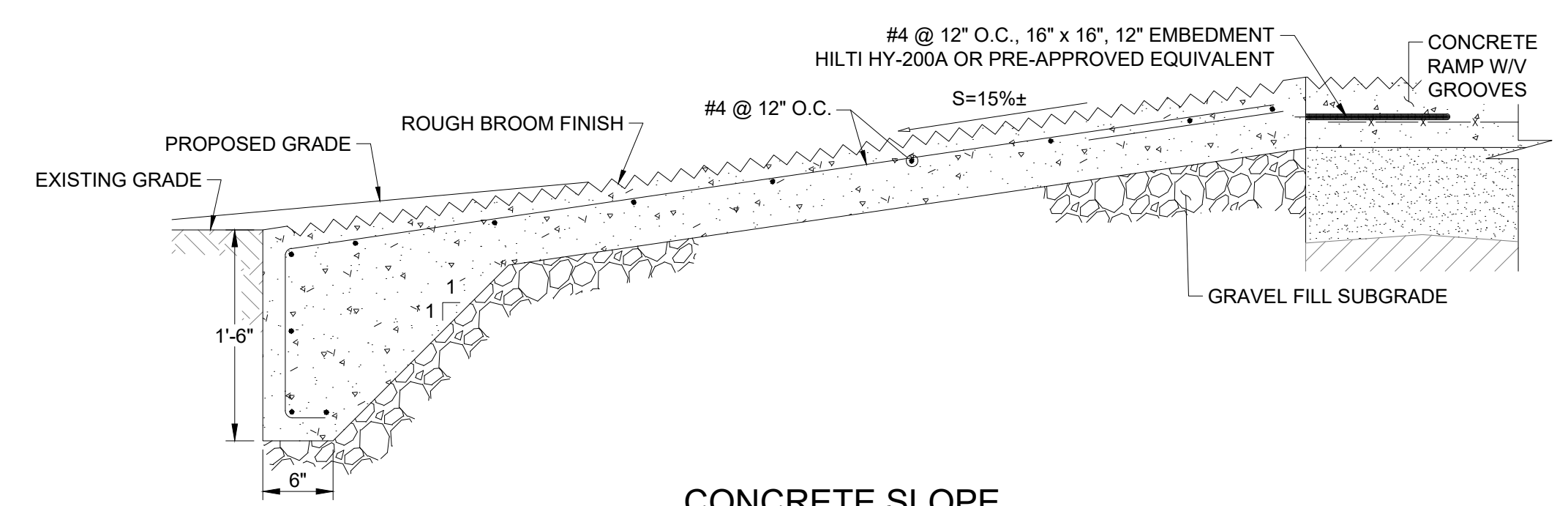
6" CONCRETE BOAT RAMP
 SCALE: 1"=1'



V GROOVE DETAIL
 NOT TO SCALE



C
 3.2 PROPOSED RAMP SECTION
 SCALE: 1"=4'



CONCRETE SLOPE
 SCALE: 1"=1'

REVISIONS:

A	02/28/22	10% CONCEPT IFR
B	03/18/22	INC. COMMENTS
C	06/22/22	INC. COMMENTS
D	07/07/22	INC. COMMENTS
E	07/25/22	INC. COMMENTS
F	08/22/22	30% CLIENT IFR
G	08/22/22	INC. COMMENTS
H	08/24/22	INC. COMMENTS
I	09/12/22	INC. COMMENTS
J	09/20/22	INC. COMMENTS
K	09/22/22	INC. COMMENTS
L	09/27/22	INC. COMMENTS
M	11/28/22	INC. COMMENTS
N	01/27/23	INC. COMMENTS
O	02/07/23	INC. COMMENTS
P	03/17/23	INC. COMMENTS
Q	04/14/23	INC. COMMENTS
R	05/02/23	INC. COMMENTS
S	11/07/24	IFP

PROJECT NO.: 21236.00
 DATE: NOVEMBER 2024
 SCALE: AS NOTED
 DESIGNED BY: SL
 CHECKED BY: CCH
 DRAWN BY: LMC
 APPROVED BY: CCH

DRAWING TITLE:
PROPOSED DETAILS

DRAWING NO.:
4.1
 SHEET NO. 9 OF 11

ISSUED FOR PERMIT
 NOT FOR CONSTRUCTION



© 2022 ALL INFORMATION THESE DOCUMENTS BY PARE CORPORATION

SCALE ADJUSTMENT GUIDE
 0" 1"
 BAR IS ONE INCH ON ORIGINAL DRAWING

**SCUDDER'S LANE
 BOAT RAMP IMPROVEMENTS**
 BARNSTABLE, MASSACHUSETTS

DRAFT IFCR
 [10/31/2024]

REVISIONS:

A	02/28/22	10% CONCEPT IFR
B	03/18/22	INC. COMMENTS
C	08/22/22	INC. COMMENTS
D	07/07/22	INC. COMMENTS
E	07/25/22	INC. COMMENTS
F	08/22/22	30% CLIENT IFR
G	08/22/22	INC. COMMENTS
H	08/24/22	INC. COMMENTS
I	08/12/22	INC. COMMENTS
J	09/20/22	INC. COMMENTS
K	08/22/22	INC. COMMENTS
L	09/27/22	INC. COMMENTS
M	11/28/22	INC. COMMENTS
N	01/27/23	INC. COMMENTS
O	02/07/23	INC. COMMENTS
P	03/17/23	INC. COMMENTS
Q	04/14/23	INC. COMMENTS
R	05/02/23	INC. COMMENTS
S	11/07/24	IFP

PROJECT NO.: 21236.00
 DATE: NOVEMBER 2024
 SCALE: AS NOTED
 DESIGNED BY: SL
 CHECKED BY: CCH
 DRAWN BY: LMC
 APPROVED BY: CCH

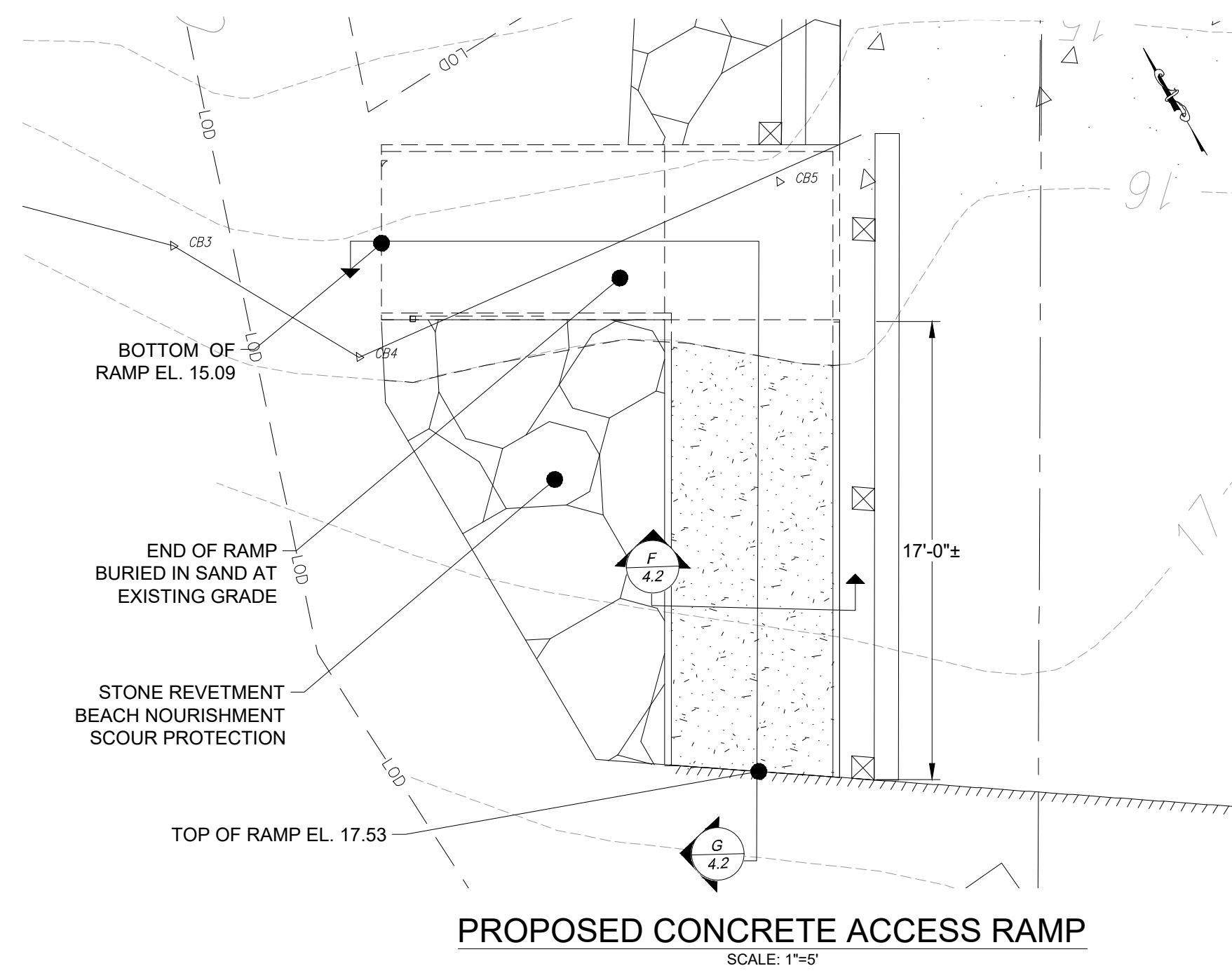
DRAWING TITLE:

PROPOSED
 DETAILS

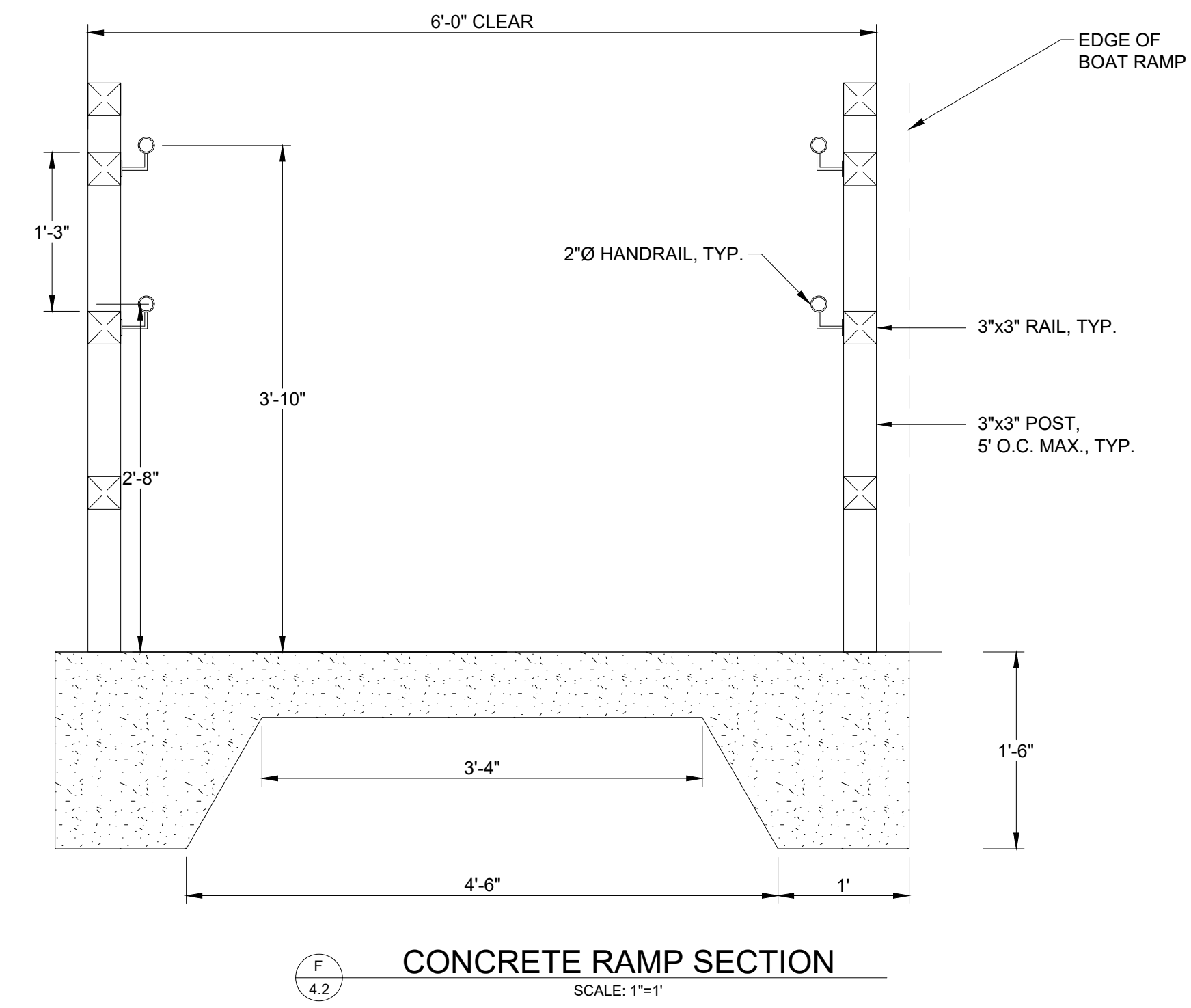
DRAWING NO.:

4.2

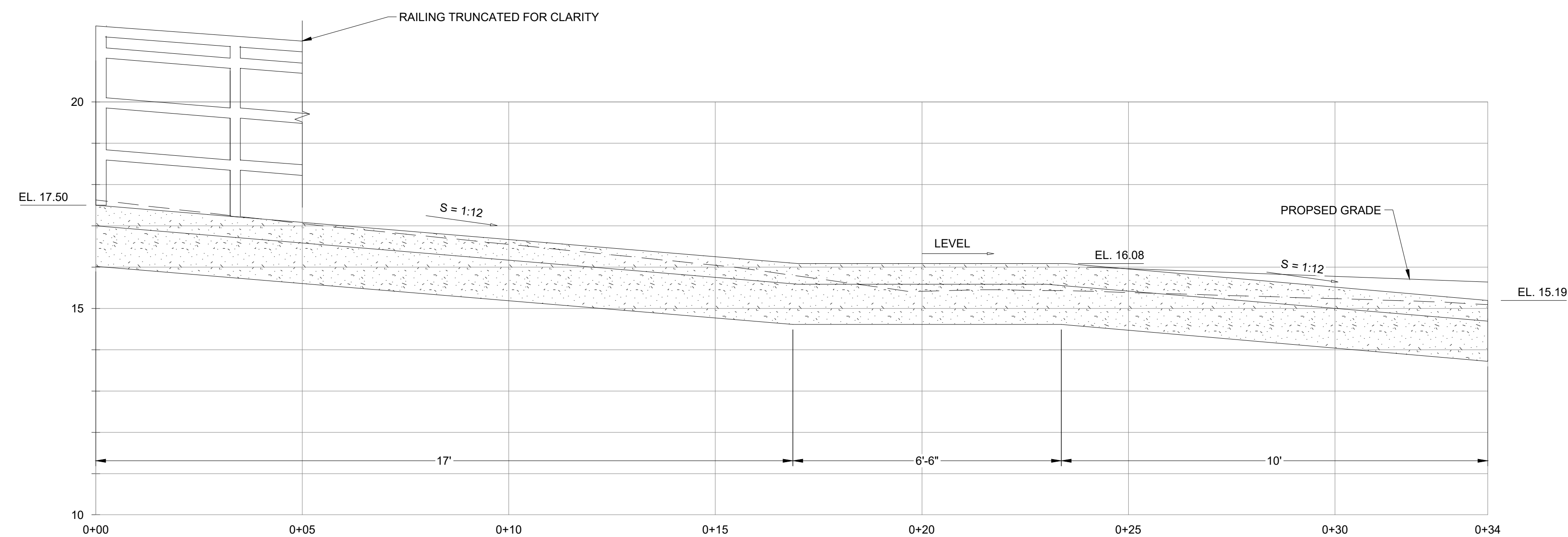
SHEET NO. 10 OF 11



PROPOSED CONCRETE ACCESS RAMP
 SCALE: 1"=5'



CONCRETE RAMP SECTION
 SCALE: 1"=1'

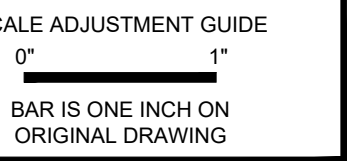


PROPOSED CONCRETE RAMP PROFILE
 SCALE: 1"=2'

ISSUED FOR PERMIT
 NOT FOR CONSTRUCTION



© 2022 ALL INFORMATION THESE DOCUMENTS BY PARE CORPORATION



SCUDDER'S LANE BOAT RAMP IMPROVEMENTS BARNSTABLE, MASSACHUSETTS

DRAFT IFCR
[10/31/2024]

REVISIONS:

A	02/28/22	10% CONCEPT IFR
B	03/18/22	INC. COMMENTS
C	08/22/22	INC. COMMENTS
D	07/07/22	INC. COMMENTS
E	07/25/22	INC. COMMENTS
F	08/22/22	30% CLIENT IFR
G	08/22/22	INC. COMMENTS
H	08/24/22	INC. COMMENTS
I	09/12/22	INC. COMMENTS
J	09/20/22	INC. COMMENTS
K	09/22/22	INC. COMMENTS
L	09/27/22	INC. COMMENTS
M	11/28/22	INC. COMMENTS
N	01/27/23	INC. COMMENTS
O	02/07/23	INC. COMMENTS
P	03/17/23	INC. COMMENTS
Q	04/14/23	INC. COMMENTS
R	05/02/23	INC. COMMENTS
S	11/07/24	IFP

PROJECT NO.: 21236.00
 DATE: NOVEMBER 2024
 SCALE: AS NOTED
 DESIGNED BY: SL
 CHECKED BY: CCH
 DRAWN BY: LMC
 APPROVED BY: CCH

DRAWING TITLE:
RESTORATION PLAN

DRAWING NO.:
5.0
 SHEET NO. 11 OF 11

SYMBOL	SPECIES	QTY	SIZE	SPACING
(N)	NORTHERN BAYBERRY (MORELLA PENSYLBANICA)	12	3 G	4' O.C
(G)	GROUNDSEL TREE (BACCHARIS HALIMIFOLIA)	12	1 G	4' O.C
(C)	CREeping JUNIPER (JUNIPERUS HORIZONTALIS)	6	3 G	3-5' O.C
(B)	BEACH PLUM (PRUNUS MARITIMA)	6	5 G	3-5' OC
■	NATIVE COASTAL SEED MIX	600 SF	---	PER SPEC



Scale: 1"=10'
 0 5' 10' 20'

RESTORATION PLAN
 SCALE: 1"=5'-0"

**ISSUED FOR PERMIT
 NOT FOR CONSTRUCTION**