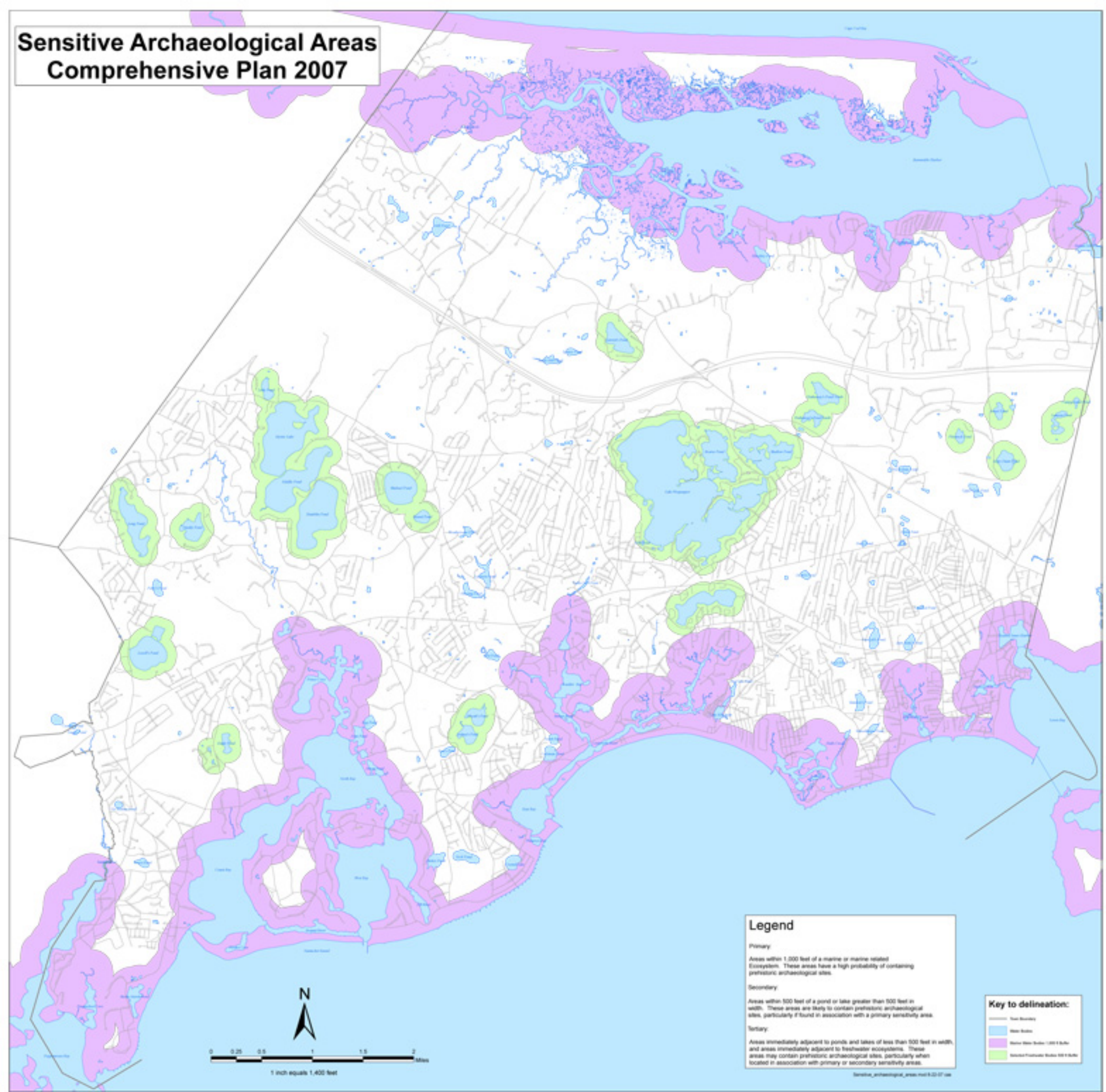


Sensitive Archaeological Areas Comprehensive Plan 2007



Legend

Primary
Areas within 1,000 feet of a marine or marine related Ecosystem. These areas have a high probability of containing prehistoric archaeological sites.

Secondary
Areas within 500 feet of a pond or lake greater than 500 feet in width. These areas are likely to contain prehistoric archaeological sites, particularly if found in association with a primary sensitivity area.

Tertiary
Areas immediately adjacent to ponds and lakes of less than 500 feet in width, and areas immediately adjacent to freshwater ecosystems. These areas may contain prehistoric archaeological sites, particularly when located in association with primary or secondary sensitivity areas.

Key to delineation:

- Stream Boundary
- Lake Boundary
- Pond Boundary
- Stream (Less Than 1,000 Feet)
- Stream (Greater Than 1,000 Feet)

Sensitive_Archaeological_Areas.mxd 4/20/07 us

